



On-campus housing

A.T. STILL UNIVERSITY | ATSU
FIRST IN WHOLE PERSON HEALTHCARE

Features

Located on campus, this 44-unit smoke-free apartment facility offers ATSU students a convenient, comfortable lifestyle at an economical rate.

Each apartment is furnished with a sofa and a full size bed/dresser in the master bedroom. Two-bedroom apartments have a twin size bed/dresser in the second bedroom. The kitchen includes a table/counter and four chairs.

Kitchenettes are complete with a full size refrigerator, stove, sink with garbage disposal, base and overhead storage cabinets, drawer space, and ventilating fan.

Students need only furnish basic living necessities such as linens, towels, shower curtains, kitchen utensils, lamps, etc.

Air conditioners are not provided, but students may bring their own (110 volt units with a maximum of 11,000 BTUs each).

Other features of the apartment complex are:

- Patio for barbecues and picnics
- Bus transportation to public schools
- Coin-operated laundry facilities on each floor, two washers and dryers for every 11 units
- Located close to the ATSU Thompson Campus Center recreational facility
- Student Recreation Lounge

Apartment design

Each apartment has a spacious 13-by-15-foot living/dining area with kitchenette and a complete bath with tub and shower. The living room and bedroom have large 6-by-5-foot windows with blinds included. The living room, hallway, and bedroom(s) are carpeted. Vinyl flooring is in the kitchen and bathroom.

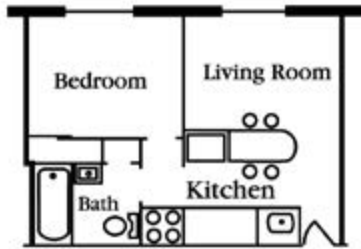
Utilities

Internet, heat, water, and trash are included in the rent. Electricity, telephone, and cable television (*if desired*) are the responsibility of the tenant.

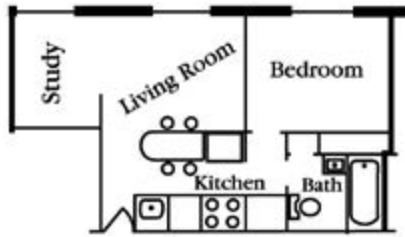
Application information

To be eligible for student housing, you must be a current student or an accepted applicant who has paid the acceptance fee.

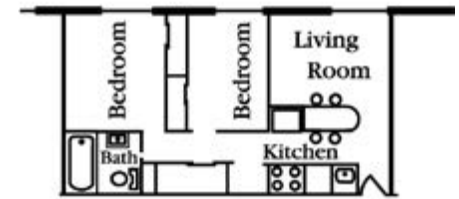
To apply for student housing, or for more information, please contact Student Life at studenthousing@atsu.edu.



One Bedroom /468 sq. ft.
15' x 13' living room/kitchenette
13' x 10' bedroom



One Bedroom w/Study /548 sq. ft.
15' x 13' living room/kitchenette
13' x 10' bedroom, 8' x 9' study



Two Bedroom /648 sq. ft.
15' x 13' living room/kitchenette
11' x 12' bedroom, 8.8' x 12' bedroom