

# 2024-25 Annual Report

**ATSU** | A.T. Still  
University  
FIRST IN WHOLE PERSON HEALTHCARE

## Contents

- P. 4 Board of Trustees
- P. 5 2024-25 focus areas
- P. 6 Year in review
- P. 12 Additional University highlights
- P. 16 Highlights by school
- P. 30 Student enrollment
- P. 32 Financials



## Contact ATSU

5850 E. Still Circle  
Mesa, AZ 85206-3618  
480.219.6000

1075 E. Betteravia Rd., Ste. 201  
Santa Maria, CA 85206  
805.621.7651

800 W. Jefferson St.  
Kirksville, MO 63501-1497  
660.626.2121

**ATSU** | A.T. Still  
University  
FIRST IN WHOLE PERSON HEALTHCARE



Learn more at [atsu.edu](https://atsu.edu)

## Dear friends and colleagues,

Blue and white balloons cascaded from the ceiling, bouncing amid smiling faces and clapping hands. Alumni, friends, faculty, and staff gathered inside A.T. Still University's (ATSU) Heritage Hall to celebrate the Museum of Osteopathic Medicine surpassing \$1 million in donations, a reflection of broad and dedicated support in preserving osteopathic medicine's history. This philanthropic success ensures the roots of whole person healthcare remain strong and visible for generations of students to come, as we continue to build upon the enduring legacy of our founder, Andrew Taylor Still, DO.

The spirit of legacy was celebrated across the ATSU community this year. ATSU's Arizona School of Health Sciences marked three decades of education in Mesa, Arizona. This milestone highlights ATSU's successful expansion and our dedication to serving diverse healthcare needs across the nation. Furthermore, our programs in Kirksville and St. Louis, Missouri, and Santa Maria, California, continued to thrive, graduating exceptional new providers dedicated to serving the underserved.


Our pursuit of preeminence extends into rigorous scientific inquiry. Research was an institutional focus in 2024-25, emphasizing innovation that directly translates into improved patient outcomes and community well-being. From investigations into health equity and community dentistry to advancements in AI integration, our faculty and staff secured numerous grants and published impactful work. This ensures an evidence-based approach remains embedded in all of our University programs, preparing future healthcare professionals to lead.

These accomplishments are a testament to the determination of our students, the passion of our faculty and staff, and the unwavering support of our alumni and friends. As ATSU continues to grow, we reaffirm our commitment to the osteopathic philosophy, academic excellence, and community engagement. Every degree awarded and every research grant received is a return on the collective investment made in our University.

The 2024-25 ATSU Annual Report celebrates these notable accomplishments and many more. We invite you to delve deeper into our University's impact and to follow our news and social media for the latest updates. We greatly appreciate your continued support.

Yours in service,

  
Craig M. Phelps, DO, '84  
ATSU chancellor

  
Isaac R. Navarro, DMD, MPH, '08  
ATSU Board of Trustees chair

## Board of Trustees

Isaac R. Navarro, DMD, MPH, '08  
Chair

Danielle Barnett-Trapp, DO, '11  
Vice Chair

Kimberly Perry, DO, MBA, MHCM, FACEP, FACOEP, '91,  
Secretary

Reid W. Butler, JD

Marco Clark, EdD

Renee Clark, MAcc

Jonathan L. Cleaver, DO, FAOCD, FAAD, FASMS, '08

Linda Eremita, MUA

Herb B. Kuhn

Michelle L. Mayo, PhD

Alan E. Morgan, MPA

Linnette J. Sells, DO, FAOASM, '82

Floyd Simpson, CFA, CAIA

John R. Thurman Jr., DO, '12

Michael Torgan, MBA, NHA

Felix M. Valbuena Jr., MD, DABFM, FAAFP

## University mission

A.T. Still University of Health Sciences serves as a learning-centered university dedicated to preparing highly competent professionals through innovative academic programs. The University is committed to continuing its osteopathic heritage and focus on whole person healthcare, scholarship, community health, interprofessional education, diversity, and underserved populations.

## Vision statement

To be the preeminent university for health professions

- Leading innovator in health professions education
- Superior students and graduates who exemplify and support the University's mission
- Osteopathic philosophy demonstrated and integrated
- Pioneering contributions to healthcare education, knowledge, and practice

## Update on 2024-25 strategic focus areas

### Flexible and engaged learning

ATSU faculty continue to explore new teaching and learning methods, including incorporating artificial intelligence, virtual reality, and augmented reality. The Teaching & Learning Center continues to provide multiple programs to assist faculty development. In addition to currently funded projects, almost \$50,000 in grants has been awarded to faculty for flexible and engaged learning projects this academic year.

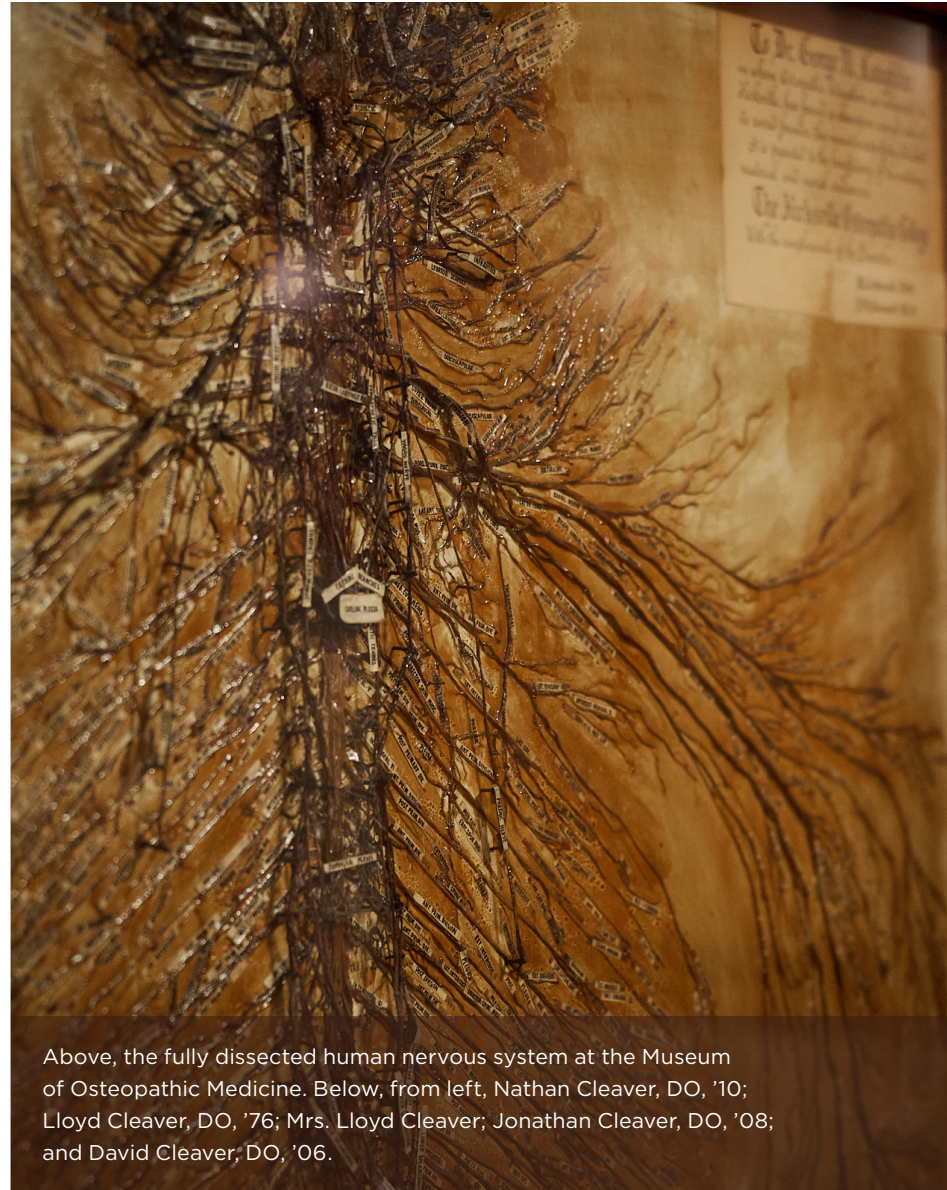
### Developing ATSU's present and future leaders

ATSU is committed to professional development opportunities for faculty and staff. In addition to current programs offered through Human Resources and faculty development, ATSU Leadership Institute offered in-person and virtual opportunities for faculty and staff to gain leadership skills and knowledge.

### Recruiting and retention

ATSU deans, along with Student Affairs and Communication & Marketing, are continuing to successfully adjust to increasing competition for students. Deans and Student Affairs are also committed to retaining applicants and students through a variety of innovative approaches.





Above, the fully dissected human nervous system at the Museum of Osteopathic Medicine. Below, from left, Nathan Cleaver, DO, '10; Lloyd Cleaver, DO, '76; Mrs. Lloyd Cleaver; Jonathan Cleaver, DO, '08; and David Cleaver, DO, '06.



## Museum of Osteopathic Medicine surpasses \$1 million in gifts, celebrates donors

ATSU celebrated the Museum of Osteopathic Medicine surpassing its \$1 million fundraising goal with a special donor recognition ceremony in October 2024, during the University's annual Founder's Day events on the Kirksville, Missouri, campus.

One of the event highlights included recognition of Lloyd Cleaver, DO, '76, and his family for their six-figure donation to establish the Cleaver Family Endowment for the museum. In honor of the family's generosity, the museum's main gallery foyer was officially named the Cleaver Family Foyer.

"Funding this endowment is a decision we made out of gratitude for the medical career I have been privileged to pursue and the osteopathic education I received at ATSU-Kirksville College of Osteopathic Medicine, the founding school of osteopathic medicine and home to the Museum of Osteopathic Medicine," said Dr. Cleaver, who was joined by his family at the ceremony. "It is a privilege I share with my sons, David Cleaver, DO, '06; Jonathan Cleaver, DO, '08; and Nathan Cleaver, DO, '10, who also chose to pursue this noble profession and attain their osteopathic medical education at ATSU."

Chris Paynter, DO, president of the Missouri Association of Osteopathic Physicians and Surgeons (MAOPS) Board of Trustees, announced a \$100,000 gift commitment from the organization, to establish the MAOPS Gallery Hall. Additionally, John Drabing, DO, '61, was recognized for contributing the final gift of nearly \$50,000 to push the campaign past its \$1 million fundraising goal.



The Museum of Osteopathic Medicine is the world's repository for the history and artifacts of the osteopathic profession. ATSU is grateful to alumni and friends who graciously donated to the museum's campaign."

**Craig M. Phelps, DO, '84,**  
chancellor, ATSU



Balloons drop in celebration of the museum surpassing its fundraising goal.



Clockwise, from top left: Michelle Mollick, MBA, senior director of sponsored programs, and Romona Muller, EdD, MSDH, RDH, associate professor, ATSU-MOSDOH; Attendees gather at the NIH National Institute of Dental and Craniofacial Research Forum; From left, Kim Perry, DDS, MSCS, chief partnership officer, Hanan Omar, BDS, PhD, MSc, ATSU-MOSDOH assistant dean of research, Ann Spolarich, PhD, MS, RDH, assistant dean of research, ATSU-ASDOH, and Gaylah Sublette, MBA, interim president, ATSU Missouri campus, and vice chancellor of research & grants; and Josh Coffey, DMD, '18, ATSU-MOSDOH alumnus.



## ATSU hosts NIH National Institute of Dental and Craniofacial Research Forum

ATSU hosted the National Institutes of Health (NIH) National Institute of Dental and Craniofacial Research (NIDCR) Forum in St. Louis in August 2024. The forum marked a milestone in the University's ongoing efforts to engage in research addressing the needs of underserved populations and contribute to the overall advancement of oral and whole person health.

NIDCR is the federal government's lead agency for scientific research on dental, oral, and craniofacial health and disease. Its mission is to advance fundamental knowledge about dental, oral, and craniofacial health and disease and translate these findings into prevention, early detection, and treatment strategies that improve overall health for all individuals and communities across the lifespan.

Keynote speaker Jennifer Webster-Cyriaque, DDS, PhD, acting director of NIDCR, presented "Oral Health for All: Realizing the Promise of Science," which highlighted the state of oral health globally and in the U.S. She discussed oral disease as a universal challenge, affecting approximately 3.5 billion people – a \$500 billion burden – with untreated caries in permanent teeth being the most prevalent of all conditions. She also discussed societal implications of oral disease and how it affects issues including workforce productivity and military readiness.

Following the keynote, a panel discussion was led by Gaylah Sublette, MBA, interim president of ATSU's Missouri campus and vice chancellor of research & grants; Ann Spolarich, PhD, RDH, assistant dean of research at ATSU's Arizona School of Dentistry & Oral Health (ATSU-ASDOH); Hanan Omar, BDS, PhD, MSc, assistant dean of research at ATSU's Missouri School of Dentistry & Oral Health (ATSU-MOSDOH); and Kim B. Perry, DDS, MSCS, chief partnership officer at ATSU.



This forum provided a platform for National Institute of Dental and Craniofacial Research to learn more about ATSU's mission-focused research and culture while stimulating collaborative conversations within ATSU's own research community. Moving forward, ATSU's investigators gained a much better perspective on NIDCR's funding mechanisms and pathways to improving oral health for all.

**Gaylah Sublette, MBA, interim president of ATSU's Missouri campus and vice chancellor of research & grants**

Underscoring the University's commitment to supporting a pipeline of researchers, the forum included a session with ATSU alumni researchers. Josh Coffey, DMD, '18, ATSU-MOSDOH, and Samantha Yineman, DMD, MPH, '20, ATSU-ASDOH, now an ATSU-ASDOH assistant professor and faculty researcher, shared their career stories and research experience as students.



Images from the 2025 Black Men In White Coats Youth Summit event at ATSU.



ATSU Annual Report 2024-25 | Page 10

# Diversity



ATSU's commitment to diversity and inclusion strengthens the University community. This focus is not only preparing healthcare professionals to effectively serve all members of their communities, but forging vital connections with future generations of students and earning national recognition for the institution.

**Among many achievements in 2024-25:**

- ATSU was named a recipient of the 2024 Health Professions Higher Education Excellence in Diversity (HEED) Award by *INSIGHT Into Diversity* magazine, the oldest and largest diversity-focused publication in higher education, for an eighth consecutive year.
- A.T. Still Memorial Library was named a recipient of the 2025 Library Excellence in Access and Diversity (LEAD) Award by *INSIGHT Into Diversity* magazine for the second consecutive year.
- In August, ATSU's Dreamline Pathways program received the 2024 Inspiring Programs in STEM Award from *INSIGHT Into Diversity* magazine, the fourth consecutive honor for the program, and in May received the 2025 award, marking the fifth consecutive recognition. The Inspiring Programs in STEM Award honors colleges and universities that encourage and assist students from underrepresented groups to enter the fields of science, technology, engineering, and mathematics (STEM).
- ATSU Diversity & Inclusion hosted Diversity Festivals on the Arizona and California campuses, and in partnership with other organizations in Kirksville, Missouri.
- ATSU Diversity & Inclusion hosted the annual GPS Golf Tournament to benefit the University's Graduate Health Professions Scholarship (GPS) in April 2025.

Representation is powerful, and events like these help pave the way for a more diverse and inclusive future in healthcare. ATSU was honored to host the Black Men in White Coats Youth Summit, providing students from historically underrepresented backgrounds the opportunity to explore, dream, and pursue careers in medicine.

[Brian Castillo-Murillo, coordinator, ATSU Diversity & Inclusion](#)

Additionally, ATSU hosted the second annual Black Men in White Coats Youth Summit in February 2025. Themed "Rhythm and Resilience: The Doctor's Mixtape," the event brought together K-12 students, families, and community members to explore healthcare careers in an interactive setting designed to spark interest and cultivate future healthcare leaders.

Held on the University's Mesa, Arizona, campus, in partnership with the Academic Medical Consortium of Arizona (AMCA), the summit featured panel discussions with healthcare professionals, hands-on simulation labs, and opportunities for attendees to explore college exhibits and connect with professionals in the field.

With over 700 registrants, this year's summit had a variety of experiences for attendees of every age.

## Additional University highlights



Above and below, students present their research during the IBRS event in Kirksville, Missouri.

### Interdisciplinary Biomedical Research Symposium hosted in Kirksville

A.T. Still Research Institute (ATSRI) hosted the annual Interdisciplinary Biomedical Research Symposium (IBRS) in November in Kirksville, Missouri.

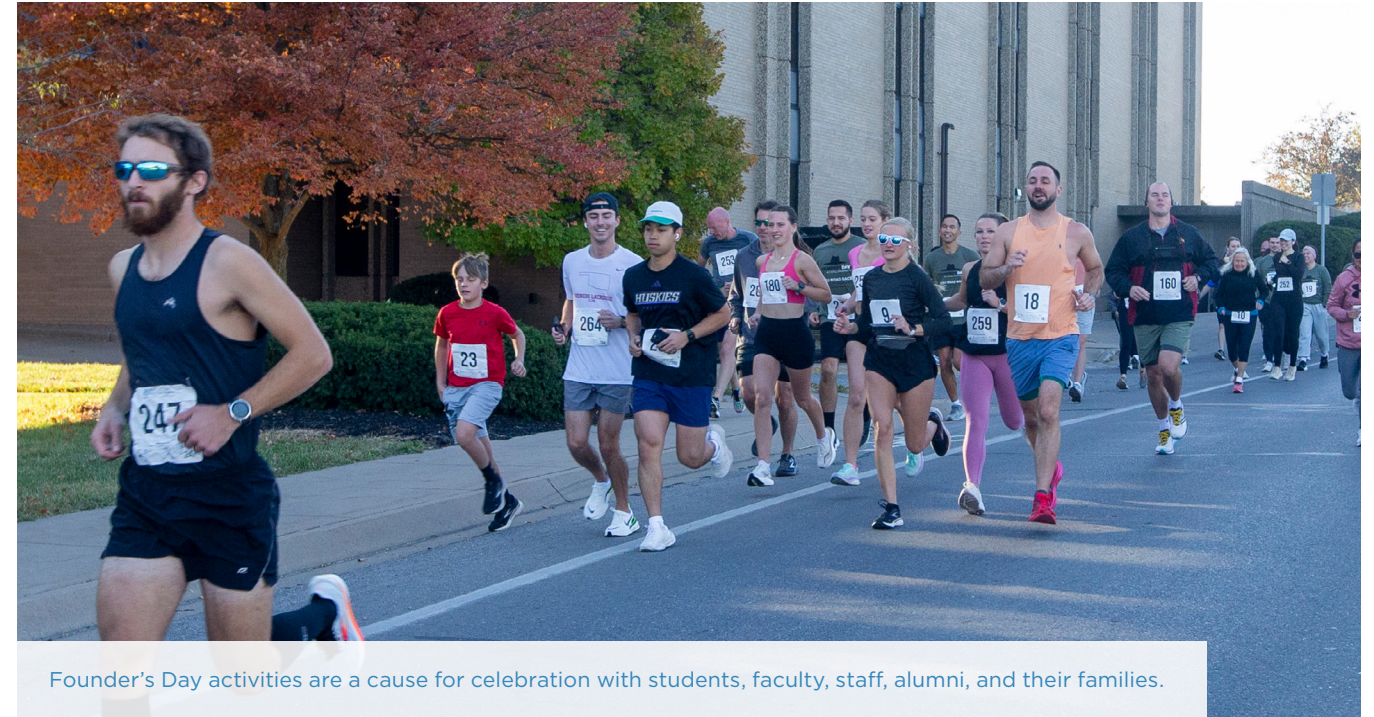
The event featured oral and poster presentations of research studies by ATSU graduate students, faculty, and staff; Still OPTI resident physicians; Truman State University undergraduate students; and other biomedical researchers and students.

ATSU-Arizona School of Dentistry & Oral Health (ATSU-ASDOH) student Hannah Lee, D4, won Best Oral Presentation for her project, "Computational inhibition of the KIX protein to treat acute myeloid leukemia." Project sponsors were Joseph Creech, DDS, adjunct faculty, ATSU-ASDOH, Stefanie Sotello, DDS, assistant professor, ATSU-ASDOH, Sara Karlin, DDS, adjunct faculty, ATSU-ASDOH, Mitzi Wasden, DDS, MS, adjunct faculty, ATSU-ASDOH, Ann Spolarich, RDH, PhD, assistant dean, research, ATSU-ASDOH.

### ATSU Sponsored Programs reports \$5.1 million in grant awards

ATSU's Research, Grants & Scholarly Innovations reported another productive and exciting year at ATSU in terms of grant trends, research support and collaboration, and research productivity.

ATSU Sponsored Programs reported about \$5.1 million in grant awards for 22 projects. Additionally, ATSU faculty and staff published 267 peer-reviewed articles.



Founder's Day activities are a cause for celebration with students, faculty, staff, alumni, and their families.

### Founder's Day

ATSU students, faculty, staff, alumni, and friends gathered in October to celebrate Founder's Day. Events on the Arizona and Missouri campuses included the annual flag football championships, festivals, continuing education opportunities, a 5K, and the Tinning Founder's Day Osteopathy Lecture, this year delivered by alumnus Richard W. Koss, DO, C-SPOMM, ACOFP, '82. The lecture may be viewed on ATSU's YouTube channel.



## Additional University highlights



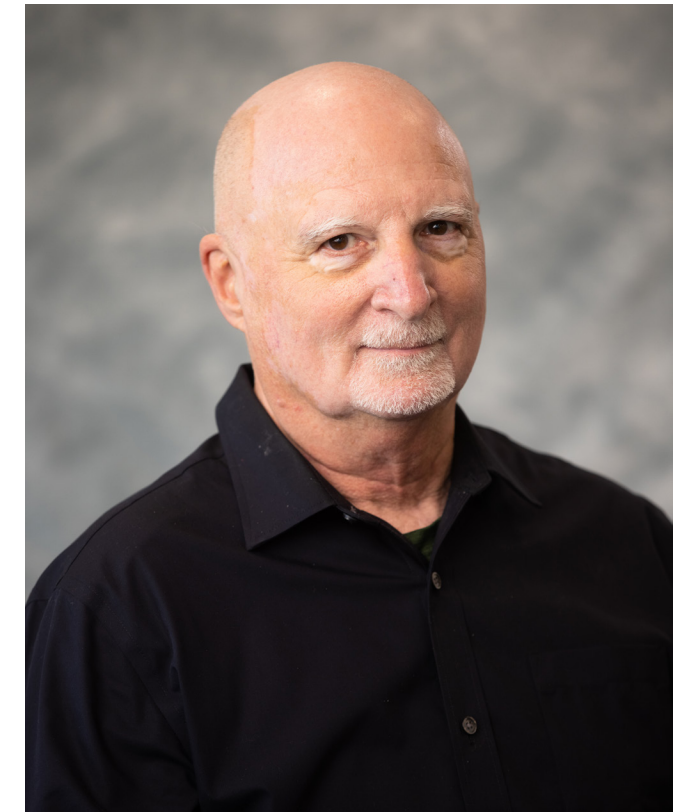
ATSU volunteers helped support free health screenings during the Special Olympics Missouri State Summer Games in Kirksville.

### Special Olympics

For the first time in its history, the Special Olympics Missouri State Summer Games took place in Kirksville, bringing together approximately 1,000 athletes, coaches, families, volunteers, and supporters from across the state. Held on Truman State University's campus from May 30-June 1, the 2025 State Summer Games represented a weekend of competition, camaraderie, and community spirit.

Thanks to support from medical partners, including ATSU volunteers, 408 free health screenings were provided in health and fitness, hearing, oral health, and more – all aimed at improving athletes' overall well-being and performance.

ATSU faculty, staff, students, alumni, and family members volunteered throughout the weekend. In addition to Healthy Athletes, ATSU volunteers helped with move-in crews, meal crews, and athletic events, as well as event planning and support.



### Organizational structure update

ATSU updated its organizational structure, positioning the University for continued growth to meet America's healthcare needs. Effective July 1, 2024, ATSU President Craig M. Phelps, DO, '84, had his role updated to chancellor, overseeing the entire ATSU system. Two regional presidents, one serving Arizona and California locations and one serving Missouri locations, were also installed. O.T. Wendel, PhD, (above, right) became president of ATSU's Arizona and California locations. Gaylah Sublette, MBA, (above, left) was named interim president of ATSU's Missouri locations.

## Highlights by school

A.T. Still University-Arizona School of Dentistry & Oral Health (ATSU-ASDOH)



Clockwise, from top right: ATSU-ASDOH's Give Kids A Smile event is fun for all ages; ATSU-ASDOH students pose for a photo at their White Coat Ceremony; Desmond "Des" Gallagher, BDS, MA; and pictured, from left, at the dedication of Dr. George Blue Spruce Jr. Day, are Dougherty Tsalabutie, EdD, MPH; Craig M. Phelps, DO, '84; George Blue Spruce Jr., DDS, MPH; Mrs. Patricia Blue Spruce; and Clinton Normore, MBA.



## Dr. Desmond Gallagher appointed new dean of ATSU-ASDOH



ATSU-ASDOH announced the appointment of Desmond "Des" Gallagher, BDS, MA, as dean, effective Sept. 11, 2024.

Dr. Gallagher previously served as associate dean of clinical services and executive associate dean and chair of the Department of Clinical Oral Healthcare at the University of the Pacific Arthur A. Dugoni School of Dentistry in San Francisco, California.

With nearly 30 years of professional experience, Dr. Gallagher brings a wealth of knowledge and expertise to ATSU-ASDOH. He began his dental and military career as a general dentistry and anesthesiology program resident in Germany. During his seven years of active service, Dr. Gallagher undertook several operational tours, including command and leadership of combined medical/dental assets.

After military service, he established a dental office, and in 2012, he joined the Dugoni School of Dentistry as a group practice leader and course director for the dental urgent care clinic and clinical application of evidence-based dentistry. He is also an examiner for the License in Dental Surgery at the Royal College of Surgeons of England and a Commission on Dental Accreditation site visitor.

Dr. Gallagher earned his dental degree from the University of Wales College of Medicine School of Dentistry in 1994 and received a master's degree in dental education from the University of the Pacific in 2016. His honors and awards include the Dugoni Dental Faculty Council Distinguished Faculty Award and the Associated Student Body Award for teaching excellence. He is a fellow of the ADEA Leadership Institute and the American College of Dentists and an associate fellow of the College of General Dentistry in England.

Dr. Gallagher succeeds Robert Trombly, DDS, JD, who was named dean emeritus.

It is a great honor to serve as the third dean of ATSU-ASDOH, following the inspiring leadership and impactful public health legacy of Dean Emeriti Dillenberg and Trombly. I am committed to ensuring we remain dedicated to our founding mission of serving the underserved. We will honor this legacy by fostering innovation to prepare our students for future models of practice and by promoting whole person care with the excellence, compassion, and integrity that define our ATSU-ASDOH family.

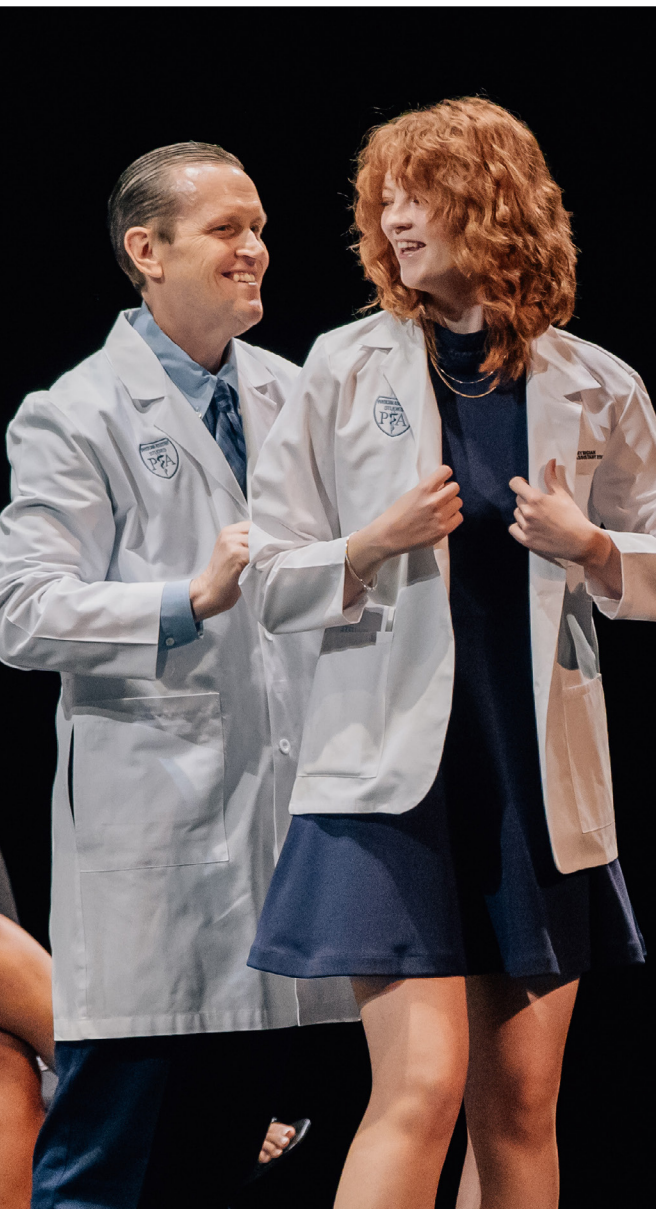
**Desmond Gallagher, BDS, MA,**  
dean, ATSU-ASDOH

### Additional ATSU-ASDOH highlights

- Hosted the annual Give Kids A Smile event with 426 people in attendance and 388 volunteers, including students, faculty, and staff.
- Third- and fourth-year students achieved 100% first-time pass rate on the Integrated National Board Dental Examination.
- Formally declared Nov. 19 as Dr. George Blue Spruce Jr. Day, honoring George Blue Spruce Jr., DDS, MPH, assistant dean, American Indian affairs, ATSU-ASDOH, for his lifelong dedication to advancing healthcare, education, and opportunities for American Indian and Alaska Native communities.

## Highlights by school

A.T. Still University-Arizona School of Health Sciences (ATSU-ASHS)



ATSU-ASHS students and graduates are all smiles at commencement and white coat ceremonies.



## Honoring legacy, celebrating impact: ATSU-ASHS marks 30 years of excellence

ATSU-ASHS celebrated a remarkable milestone on April 12, 2025 – 30 years of advancing healthcare education, innovation, and service.

Founded in 1995, ATSU-ASHS has grown from a bold vision into a thriving academic community dedicated to whole person healthcare. Throughout the celebration, attendees reflected on the journey of the institution and honored those who have shaped its success – most notably, several extraordinary alumni whose professional paths reflect ASHS's highest ideals.

Ann Lee Burch, PT, EdD, MPH, FNAP, dean of ATSU-ASHS, shared key highlights and achievements, celebrating the School's growth, commitment to whole person healthcare, and the collective impact of its community. Randy Danielsen, PhD, PA-C Emeritus, former dean of ATSU-ASHS and invited guest, reflected on the early years of the School and the evolution seen over the past three decades.

As ATSU-ASHS enters its fourth decade of educating students, the School continues to uphold the values that have shaped it from the start – academic excellence, service to others, and innovation in healthcare.

### Additional ATSU-ASHS highlights

- Physician Assistant Studies program class of 2024's first-time PANCE (Physician Assistant National Certifying Examination) pass rate was 93%.
- All Master of Science in Occupational Therapy and Doctor of Occupational Therapy program graduates passed their national boards.
- The Doctor of Physical Therapy program earned reaccreditation for 10 years by the Commission on Accreditation in Physical Therapy Education.



The ATSU-Arizona School of Health Sciences is a vibrant, dynamic school where there is never a shortage of new ideas. With over 1,260 active students and a committed faculty and staff, we are busy every single day preparing the next generation of healthcare providers who will bring health and wellness to communities in need across the country and around the world for years to come.

**Ann Lee Burch, PT, EdD, MPH, FNAP,**  
dean of ATSU-ASHS

## Highlights by school

A.T. Still University-College for Healthy Communities (ATSU-CHC)



Above, ATSU-CHC CCPA students received their white coats to mark their transition to the clinical year. Below, ATSU-CHC CCPA students prepare to receive their degrees at commencement.



ATSU-CHC students and faculty joined the 2024 Called to Serve mission in Carabayllo, Peru.



ATSU Annual Report 2024-25 | Page 20

## ATSU-CHC CCPA students travel to Carabayllo, Peru, to provide care

The ATSU-CHC CCPA class of 2025 was invited to join the inaugural 2024 Called to Serve (CTS) mission in Carabayllo, the largest and poorest district in Lima, Peru. Three CCPA students, Natalie Ramirez, PA, '25, Wilson Niu, PA, '25, and Brittney Whitlock, PA, '25, and Cristina Tipei, PA-C, assistant professor, joined CTS to fulfill ATSU's mission and serve the primary care needs of the medically underserved.

CTS set up its pop-up clinic across from one of Carabayllo's health centers, Centro de Salud Juan Pablo II, the only health center for roughly 15 miles. Each morning, the team would assemble the clinic and patients lined up to be seen. Students put their didactic year education to the test and got a taste of what their upcoming clinical year would be like.

By emphasizing patient education about illness and teaching physical therapy techniques to use in activities of daily living, patients weren't just treated but given the tools to continue to heal.

### Additional ATSU-CHC highlights

- Completed third and final accreditation-provisional site visit for CCPA program.
- More than 60% of students in the first four CCPA cohorts are from historically underrepresented groups.
- Students, faculty, and staff participated in a community outreach project to assemble and donate 100 summer activity kits to children on the California Central Coast. The kits were delivered to CALM for distribution to their clients in Santa Maria, California. CALM is a community-based mental health agency with a mission to prevent childhood trauma, heal children and families, and build resilient communities throughout Santa Barbara County.



I will never forget the people of Carabayllo. They were so appreciative and kind. Peru will always have a special place in my heart because it was there that I saw and treated my first patients, bonded with my faculty and our CTS team became like a family.

Brittney Whitlock, PA, '25

## Highlights by school

A.T. Still University-College of Graduate Health Studies (ATSU-CGHS)



ATSU-CGHS graduates celebrate at commencement.



ATSU Annual Report 2024-25 | Page 22

## ATSU-CGHS commencement sees more than 200 students earn advanced degrees in health professions

ATSU-CGHS celebrated the graduation of 214 students from nine different degree programs at a commencement ceremony in May 2025, at the Mesa Arts Center in Mesa, Arizona.

Of that total, 81 earned master of public health (MPH) degrees, 62 earned doctor of health sciences (DHSc) degrees, 31 earned doctor of education in health professions education (EdD) degrees, 22 earned master of science in kinesiology (MSK) degrees, nine earned doctor of health administration (DHA) degrees, four earned master of health administration (MHA) degrees, two earned master of education in health professions education (MEd) degrees, two earned master of health sciences (MHSc) degrees, and one earned a doctor of nursing practice degree (DNP).

The commencement address was delivered by Donald Altman, DDS, DHSc, EdD, '12, vice chancellor, academic support. Dr. Altman has served ATSU in various capacities since 2006, including as associate vice president of academic affairs, dean of ATSU-CGHS, and director of public health and research at ATSU-Arizona School of Dentistry & Oral Health.

### Additional ATSU-CGHS highlights

- Established and expanded the Office of Scholarly & Professional Development, offering scientific writing, statistics, and career services.
- Launched a Health Administration certificate program for community health center leaders.
- Developed the Public Health Advocacy and Leadership Certificate, featuring new courses and partnerships for dual-degree programs between ATSU-CGHS and other ATSU schools and colleges beginning in 2025-26.

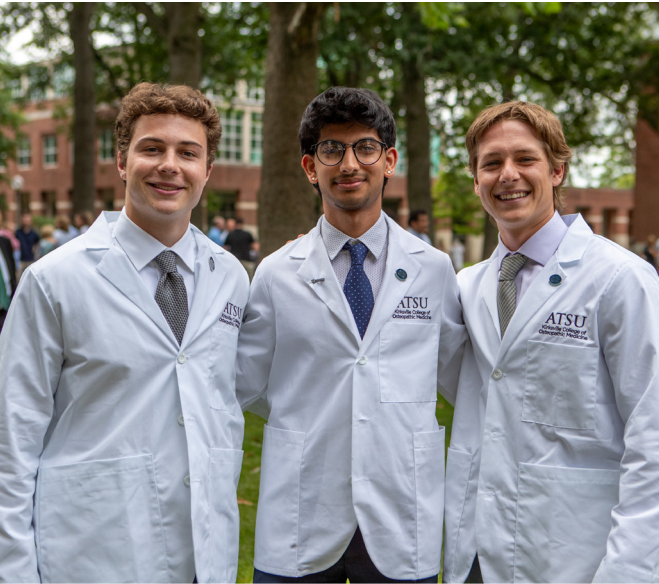


The hard work and accomplishments in obtaining your degree sets you apart. You are well prepared for new challenges. In addition to the knowledge and experience you've gained at ATSU, you have the support of those sitting behind you, next to you, and in front of you.

Craig M. Phelps, DO, '84,  
chancellor, ATSU

## Highlights by school

A.T. Still University-Kirksville College of Osteopathic Medicine (ATSU-KCOM)



ATSU-KCOM students celebrate at white coat and commencement ceremonies.



ATSU Annual Report 2024-25 | Page 24

## ATSU-KCOM recognized as No. 1 for graduates who go on to serve rural communities

Rankings published by U.S. News & World Report showed ATSU-KCOM graduates ranked No. 1 for going on to practice in rural areas.

The magazine's 2025 Best Medical Schools list, compiled with data from the Robert Graham Center, a division of the American Academy of Family Physicians, found 31.9% of ATSU-KCOM graduates from 2016-18 are practicing in rural areas, more than any other osteopathic or allopathic medical school in the U.S.

Additionally, ATSU-KCOM ranked No. 6 nationwide both in graduates practicing in medically underserved areas and primary care fields. More than two-thirds of those graduates (67.7%) are practicing in medically underserved areas, while 41.8% are practicing in primary care fields.

### Additional ATSU-KCOM highlights

- First-time pass rates on COMLEX Levels 1 and 2 exams continue to be above the national average.
- Graduate Medical Education match rate is 99.4% on a four-year rolling average.
- Reported 99% of graduates recommend ATSU-KCOM to pre-med students, according to the class of 2025 Senior Survey.



This meets our mission and values to have graduates who serve in communities that need them most. This long-standing commitment to producing primary care physicians for all underserved areas of need truly makes an impact on healthcare for the country. We are proud of our graduates and the lasting effect our school has made.

**Margaret Wilson, DO, '82,**  
dean, ATSU-KCOM

## Highlights by school

A.T. Still University-Missouri School of Dentistry & Oral Health (ATSU-MOSDOH)



Above and right, ATSU-MOSDOH students are seen at commencement and white coat ceremonies. Top right, ATSU-MOSDOH students provided dental screenings for students during Give Kids A Smile in Macon, Missouri.



## ATSU-MOSDOH students take Give Kids A Smile event to elementary school students



Students from ATSU-MOSDOH visited Macon Elementary in Macon, Missouri, in April 2025 for Give Kids A Smile. The annual event brought dental education, games, dental screenings, and dental work provided by Northeast Missouri Health Council.

The event had 480 children participate in a variety of oral health education and clinical services, with 68 receiving dental screenings performed by ATSU-MOSDOH students and 12 receiving treatment from Northeast Missouri Health Council providers. Fluoride varnish was applied to 297 children, reinforcing enamel strength and cavity prevention.

The total value of care provided exceeded \$5,300.

### Additional ATSU-MOSDOH highlights

- Class of 2025 completed the Integrated National Board Dental Examination with a pass rate of 95.1%.
- Class of 2026 completed the Integrated National Board Dental Examination with a first-time pass rate of 96.7%.
- ATSU-MOSDOH faculty have demonstrated strong scholarly productivity, publishing more than 25 peer-reviewed articles across diverse fields including dental education, basic sciences, clinical dentistry and public health.

I would like to express my sincere gratitude and pride in our event chairs and all of the first- and second-year dental students who participated in this year's Give Kids A Smile event. Your leadership, enthusiasm, and professionalism made this day impactful for every child who walked through our stations. It was inspiring to watch you all work together with purpose and compassion – your dedication to community care represents the very best of ATSU-MOSDOH.

**Whitney Schmitz, BSDH, RDH,**  
instructor, preclinical dental hygienist,  
ATSU-MOSDOH

## Highlights by school

A.T. Still University-School of Osteopathic Medicine in Arizona (ATSU-SOMA)



ATSU-SOMA students are pictured at commencement and white coat ceremonies.



ATSU Annual Report 2024-25 | Page 28

## ATSU-SOMA ranked No. 1 for most graduates practicing in primary care



Rankings published by U.S. News & World Report show more graduates of ATSU-SOMA go on to practice in primary care fields than from any osteopathic or allopathic medical school in the U.S.

The magazine's 2025 Best Medical Schools list, with data from the Robert Graham Center, a division of the American Academy of Family Physicians, found 47.9% of ATSU-SOMA graduates from 2016-18 are practicing in primary care fields.

Additionally, the report found nearly 31% of ATSU-SOMA graduates are practicing in medically underserved areas.

### Additional ATSU-SOMA highlights

- Students participated in annual Rotation Readiness and Residency Readiness programming, including medical simulations, standardized patient encounters, and hands-on education in multiple procedures.
- Each student participated in a Community Oriented Primary Care research project during their second year, positively impacting underserved communities.
- Reported its Graduate Medical Education residency match placement was 98.7% for the class of 2025

I am so pleased ATSU-SOMA has been recognized and ranked No. 1 for medical schools with the most graduates practicing in primary care. I am incredibly proud to share in this impressive distinction with our ATSU-SOMA alumni, faculty, staff, community partners, and students as a testament to our thriving mission fulfillment.

Sharon Obadia, DO, FNAOME, '97,  
dean of ATSU-SOMA

## 2024-25 student enrollment

### Arizona School of Dentistry & Oral Health

Doctor of Dental Medicine-----312  
 Master of Science in Orthodontics ----- 16

### Arizona School of Health Sciences

#### Residential programs

Doctor of Audiology -----56  
 Doctor of Physical Therapy -----155  
 Master of Science in Occupational Therapy -----86  
 Master of Science in Physician Assistant Studies -- 203  
 Doctor of Occupational Therapy -----32  
 Master of Science in Speech-Language Pathology-- 61

#### Online programs

Doctor of Audiology Post-professional-----76  
 Certificate in Athletic Training Education -----1  
 Certificate in Clinical Decision-Making-----1  
 Certificate in Rehabilitation-----3  
 Certificate in Sport Neurology and Concussion-----1  
 Doctor of Athletic Training-----63  
 Doctor of Medical Science -----132  
 Doctor of Physical Therapy Post-professional-----54  
 Master of Science in Biomedical Sciences -----33  
 Master of Science in Athletic Training----- 15  
 Non-Degree Seeking Physical Therapy-----20  
 Non-Degree Seeking Audiology-----2  
 Orthopedic Physical Therapy Residency ----- 4

### College for Healthy Communities

Master of Science in Physician Assistant Studies --- 141

**Total enrollment: 3,696**

### College of Graduate Health Studies

Certificate in Exercise and Sport Psychology -----1  
 Certificate in Health Professions Education----- 2  
 Certificate in Public Health-Dental Emphasis (PHDE)-159  
 Certificate in Public Health-----25  
 Certificate in Public Health Workforce Preparedness --19  
 Certificate in Public Health Emergency Preparedness  
 and Disaster Response -----1  
 Doctor of Nursing Practice ----- 2  
 Master of Education----- 4

Master of Health Administration ----- 13  
 Master of Health Sciences----- 4  
 Doctor of Health Administration-----69  
 Doctor of Health Sciences -----132  
 Doctor of Education ----- 109  
 Master of Science in Kinesiology -----36  
 Master of Public Health----- 112  
 Master of Public Health-Dental Emphasis ----- 61  
 Non-Degree Seeking Health Sciences -----1  
 Dental Public Health Residency----- 5

### Kirkville College of Osteopathic Medicine

Master of Science in Biomedical Sciences ----- 9  
 Doctor of Osteopathic Medicine-----671

### Missouri School of Dentistry & Oral Health

Doctor of Dental Medicine ----- 269

### School of Osteopathic Medicine in Arizona

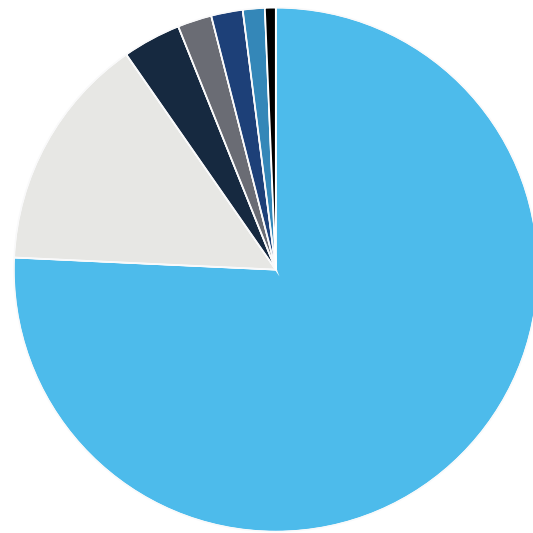
Doctor of Osteopathic Medicine----- 525



## Financial highlights | FYE 2025 audited financials

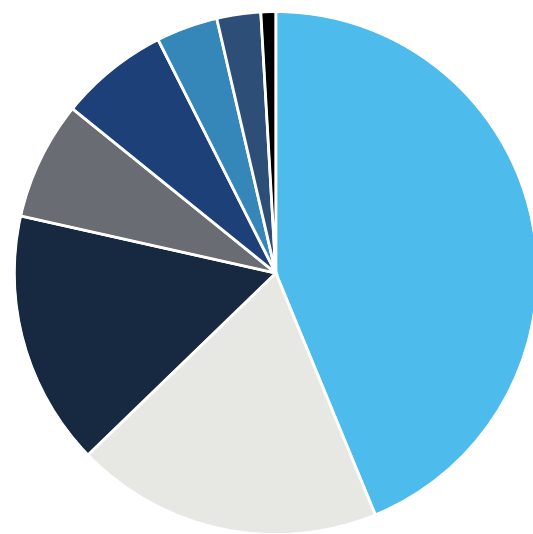
### REVENUE | in thousands

Tuition and fees	\$188,331	75.7%	<span style="color: #00AEEF;">■</span>
Investment income	36,297	14.6%	<span style="color: #A9A9A9;">■</span>
Clinic services	8,940	3.6%	<span style="color: #000000;">■</span>
Grants	5,235	2.1%	<span style="color: #4F4F4F;">■</span>
Contributed services	4,843	1.9%	<span style="color: #000080;">■</span>
Other	3,361	1.4%	<span style="color: #0070C0;">■</span>
Gifts	1,657	0.7%	<span style="color: #000000;">■</span>
<b>Total Revenue</b>	<b>\$248,664</b>	<b>100.0%</b>	



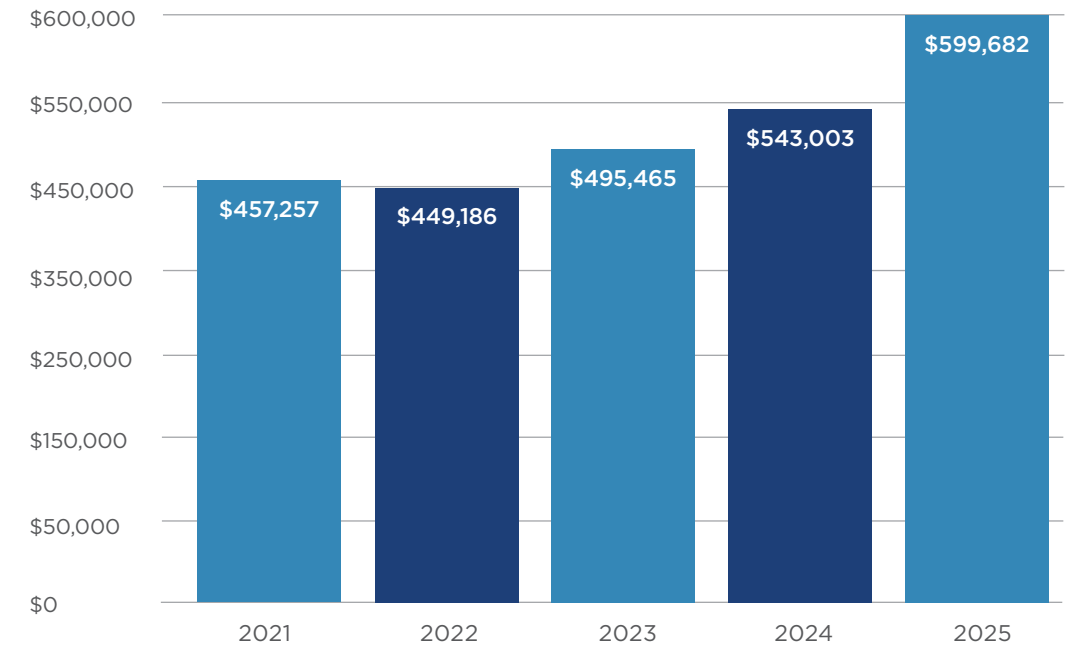
### Expenses | in thousands

Instruction	\$85,110	43.7%	<span style="color: #00AEEF;">■</span>
Academic support	36,876	18.9%	<span style="color: #A9A9A9;">■</span>
Institutional support	30,611	15.7%	<span style="color: #000000;">■</span>
Plant operation & maintenance	14,213	7.3%	<span style="color: #4F4F4F;">■</span>
Clinic services	13,111	6.7%	<span style="color: #000080;">■</span>
Student services	7,397	3.8%	<span style="color: #0070C0;">■</span>
Research	5,274	2.7%	<span style="color: #000080;">■</span>
Scholarships and fellowships	1,779	0.9%	<span style="color: #000000;">■</span>
Auxiliary enterprises	601	0.3%	<span style="color: #FFFFFF;">■</span>
<b>Total Expenses</b>	<b>\$194,972</b>	<b>100.0%</b>	

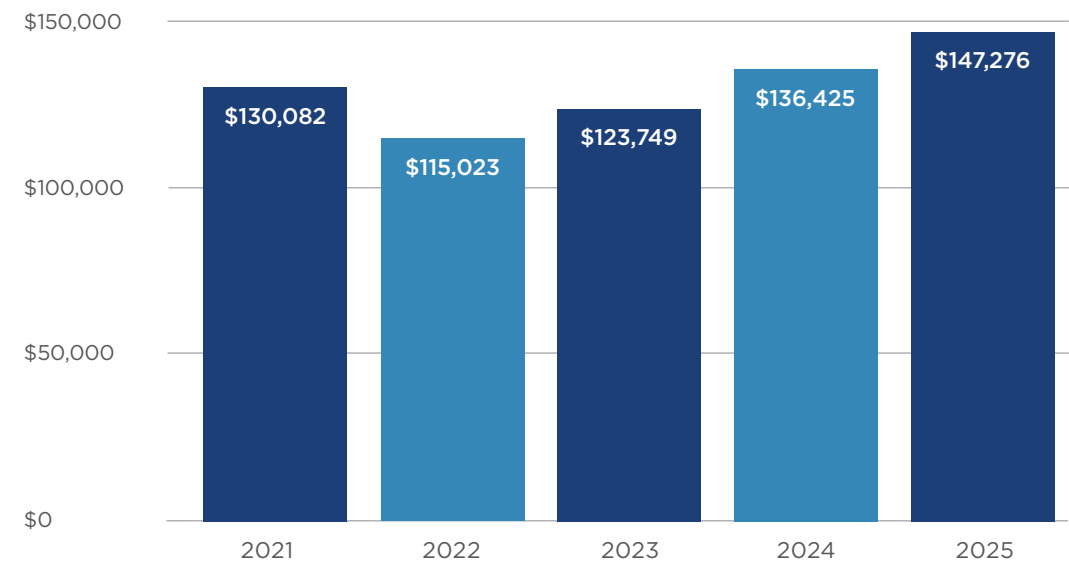


## Financial highlights | FYE 2025 audited financials

### TOTAL ASSETS | Market values | in thousands



### ENDOWMENTS | Market values | in thousands



**ATSU** | A.T. Still  
University  
FIRST IN WHOLE PERSON HEALTHCARE



Learn more at [atsu.edu](https://www.atsu.edu)