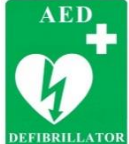
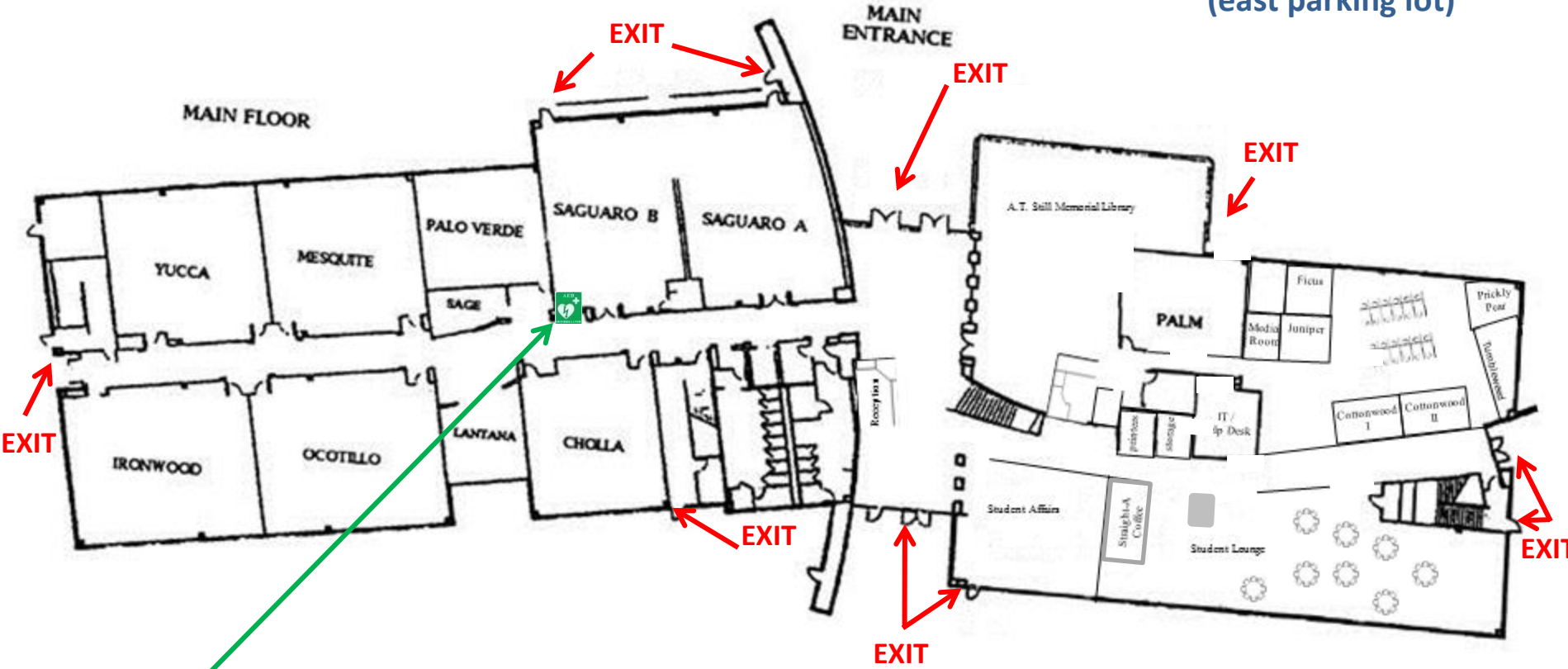


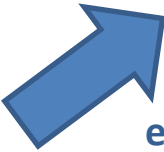


evacuation gather point
(east parking lot)

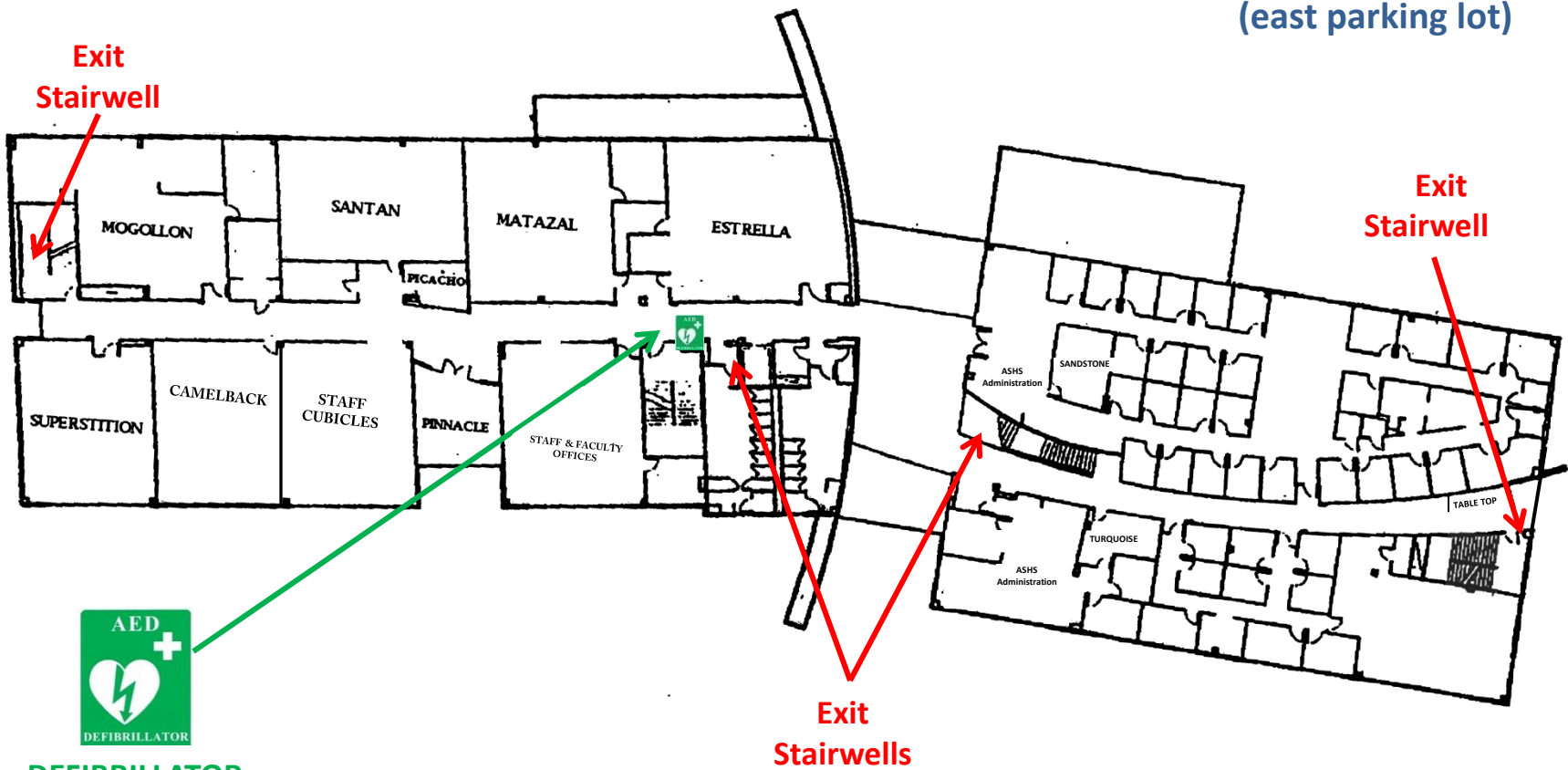


DEFIBRILLATOR

5850 E. Still Circle
Main Building
1st Floor



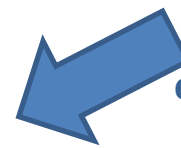
evacuation gather point
(east parking lot)



DEFIBRILLATOR

5850 E. Still Circle
Main Building
2nd Floor

**Exit
Stairwell**



**evacuation gather point
(east parking lot)**

**Exit
Stairwell**

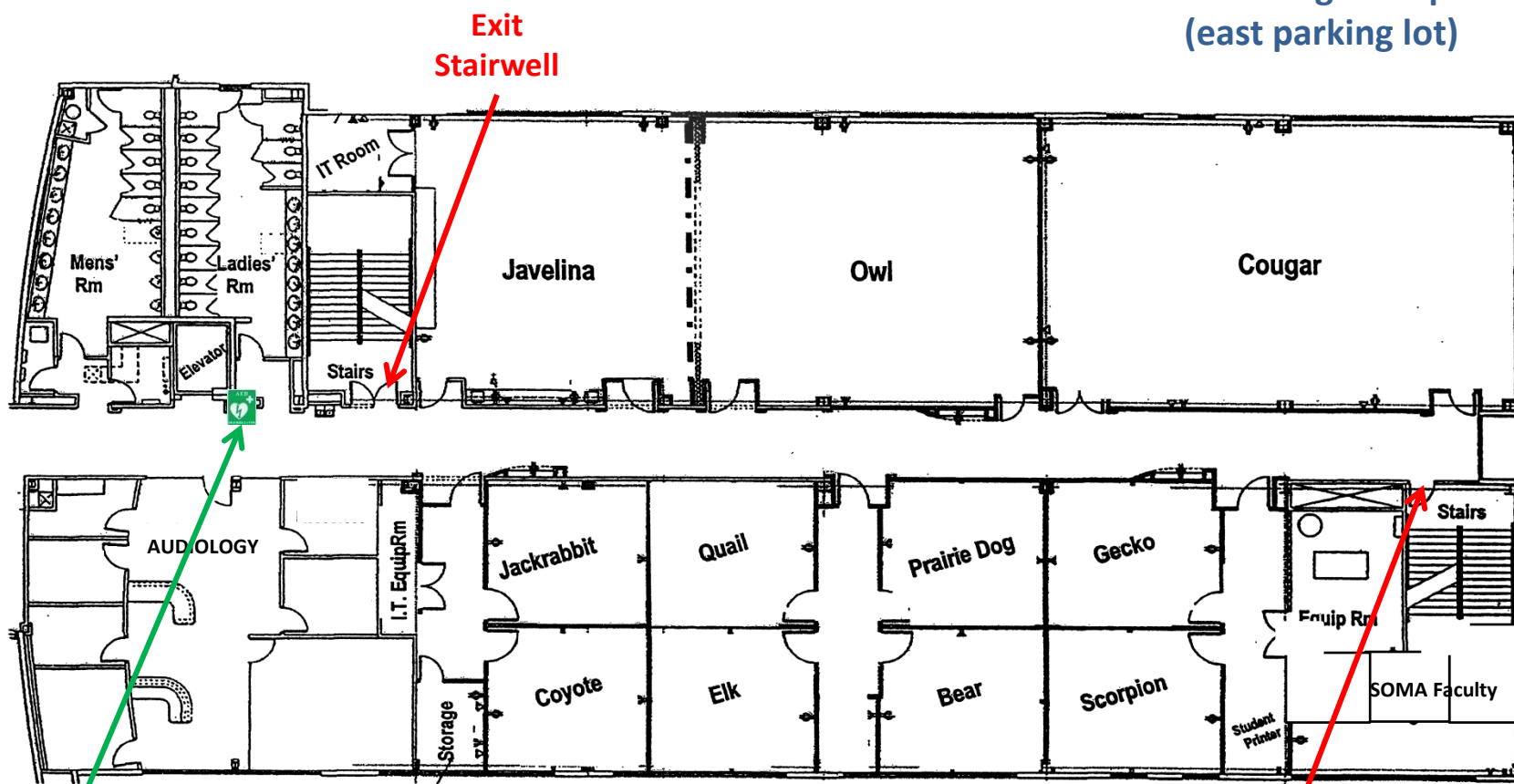


DEFIBRILLATOR

**5850 E. Still Circle
Main Building
3rd Floor, East Wing**



evacuation gather point
(east parking lot)



Exit
Stairwell

Exit
Stairwell



DEFIBRILLATOR

5850 E. Still Circle
Main Building
3rd Floor, West Wing