

# Public Health

program guide



A.T. STILL UNIVERSITY  
SCHOOL OF HEALTH MANAGEMENT

ATSU

# Table of Contents

- From the Chair. . . . . 1
- A.T. Still University . . . . . 2
- School of Health Management . . . . . 2
- Curriculum. . . . . 2
- Requirements for Admission. . . . . 2
- Program Statistics . . . . . 3
- Application Information. . . . . 3
- Tuition and Expenses . . . . . 3
- Financial Assistance . . . . . 3
- Accreditation . . . . . 3
- Course Descriptions . . . . . 4
- Program Electives . . . . . 5
- Administration . . . . . 9

## ATSU Mission Statement

A.T. Still University of Health Sciences serves as a learning-centered university dedicated to preparing highly competent professionals through innovative academic programs with a commitment to continue its osteopathic heritage and focus on whole person healthcare, scholarship, community health, interprofessional education, diversity, and underserved populations.

## Public Health Program Mission Statement

To prepare public health professionals for leadership in advancing public health, promoting individual and community health and well-being, and addressing health disparities locally, nationally, and globally



## **From the Chair**

The future of public health, nationally and globally, offers the vision of a better world to people seeking to confront complex health issues, improve access to healthcare, control infectious diseases, and reduce environmental hazards, violence, injury, substance abuse, and social inequity. It is an exciting career of working with diversely trained health professionals to advance the cause of public health. It is a profession that serves others and gives the personal satisfac-

tion that can only come with saving and improving people's lives.

The School of Health Management is committed to public health based on our more than 118-year experience with holistic healthcare and our concern for the whole patient. The MPH program is a comprehensive preparation for health administration and policy positions in private and public health sectors throughout the world. Our program provides you with the knowledge and skills for a life learning experience in a career that can make a better world.

**Katherine M. Adler, DHA, FACHE**

*Associate Professor and Program Chair*

*Public Health and Health Administration*

## **A.T. Still University**

Established in 1892 by the founder of osteopathy, A.T. Still, MD, DO, ATSU began as the nation's first college of osteopathic medicine and has evolved into a leading university of health sciences. Today, ATSU is comprised of five schools: Kirksville College of Osteopathic Medicine, School of Osteopathic Medicine in Arizona, Arizona School of Health Sciences, Arizona School of Dentistry & Oral Health, and School of Health Management.

ATSU offers more than 20 master's degrees across allied healthcare disciplines; doctorates in health education, physical therapy, health sciences, and audiology; the doctor of dental medicine (DMD); and the doctor of osteopathic medicine (DO).

## **School of Health Management**

The School of Health Management offers master's degrees in health administration and public health; and a doctoral degree in health education. SHM educates and prepares current and future professionals for management positions in a variety of healthcare settings via comprehensive online programs.

## **Curriculum**

SHM's online master's degree in public health prepares students for leadership in the field of public health. This 64-credit-hour, 15-course program meets the needs of busy professionals, allowing them to choose electives best fitting their interests. This program integrates web-based instruction, directed readings, email, and chat room interactions among students and faculty. The School uses mission-driven, context-based curriculum design and assesses student learning through authentic assessments.

## **Requirements for Admission**

1. Bachelor's degree or higher from an accredited university. Applicants who graduated from a university outside the United States must provide a degree equivalency evaluation.
2. Completed admissions application.
3. Official transcript from degree-granting institution.
4. Non-refundable application fee submitted with application.
5. Minimum cumulative Grade Point Average (CGPA) of 3.0 (4.0 scale).
6. Completion of essay, submission of two professional references, and completion of required online orientation.
7. Test of English as a Foreign Language (TOEFL) for applicants when English is not their first language. The Computer Based Test (CBT), Internet Based Test (iBT), or the Paper Based Test (PBT) are accepted. The following are the minimum required score based on test type:
  - CBT - minimum total score of 213  
›Min. 22/Reading Skills section | ›Min. 26/Writing Skills section
  - iBT - minimum total score of 80  
›Min. 22/Reading Skills section | ›Min. 24/Writing Skills section
  - PBT - minimum total score of 550  
›Min. 57/Reading Skills section | ›Min. 61/Writing Skills section
8. Applicants are selected by an admission committee.

## Program Statistics

Classroom Size .....	20
Average Student Age .....	38
Cumulative Graduate GPA.....	3.75
Length of Program .....	15 courses, 2 electives, 64 credit hours

## Application Information

Applications are available online at [www.atsu.edu](http://www.atsu.edu), or you may contact an online enrollment counselor at 877.626.5577 or [shmonlineadmissions@atsu.edu](mailto:shmonlineadmissions@atsu.edu).

## Tuition and Expenses

Tuition .....	\$1,685 per course*
Activity fee .....	\$150 per quarter*
Application fee .....	\$70, non-refundable*
	(not covered by financial aid)

Tuition is charged per course, not per credit hour. SHM tuition rates are competitive. Tuition is to be paid in full (or all financial aid award letter steps completed for the appropriate term) 14 calendar days prior to the first day of class. Students are responsible for the purchase of their Internet service fees and computer hardware and software fees. Contact your admissions representative at 877.626.5577 or [shmonlineadmissions@atsu.edu](mailto:shmonlineadmissions@atsu.edu) for more information.

\*All fees are subject to change.

## Financial Assistance

Federal Financial Aid is available to students who qualify. Scholarship and financial assistance opportunities are listed on the SHM web page at [www.atsu.edu](http://www.atsu.edu). Veterans Administration (VA) benefits may also be used.

## Accreditation

A.T. Still University is accredited by the Higher Learning Commission of the North Central Association of Colleges and Schools (NCA), 230 South LaSalle St., Suite 7-500, Chicago, IL 60602, phone 800.621.7440.

# Master of Public Health Curriculum

## *Online Learning*

### Course Descriptions

Course descriptions, course durations, and related information are subject to change. All courses are four credit hours unless otherwise stated. Courses are presented in order of a typical student Academic Degree Plan.

**HMP 700 Health Services in the U.S., A Lifespan Approach:** This course provides a comprehensive introduction to the U.S. healthcare system. Healthcare terminology, concepts, critical issues, and descriptions of existing delivery systems are presented. This course includes the mission of public health, models of health promotion and disease prevention, and determinants of health and health services utilization. The organization, delivery, financing, payment, and staffing of the U.S. health system is described. Issues of competition, regulation, technology, access, quality, primary care, long-term care, mental health, and bioethics are discussed.

**EPI 750 Epidemiology:** This course examines the study of disease in populations from a public health perspective. Topics include research methods, study designs, sampling, data analysis, interpretation of data, and application of findings for public health policy.

**MPH 651 Fundamentals of Research in Public Health:** Life-long learning is an integral skill in the healthcare industry. The ability to become a life-long learner depends on sustainable assessment skills. In this course we will focus on developing and enhancing your skills related to search strategies, problem statements, literature reviews, and proposal preparation.

**MPH 735 Introduction to Public Health Concepts:** This course is a comprehensive introduction to public health within the context of the U.S. healthcare system. Contents include the concept of public health, its problems in the context of social and community factors, its development from a historical perspective, the role and mission of public health organizations, and an overview of current public health concepts, models, and policy.

**BIO 745 Biostatistics:** Biostatistics is the study and development of statistical, mathematical, and computational methods applied to biological, health, and human sciences. Biostatisticians play a key role in the design, conduct, and analysis of research studies in areas of health and disease, and create and apply methods for quantitative research in health-related fields. Topics covered include data description, probability, distribution of random variables, applications of the binomial and normal distributions, estimation and confidence intervals, hypothesis testing, contingency tables, regression, and analysis of variance. Additional topics include an introduction to statistical computing and data management, non-parametric statistical methods, and demographic measures. Students need to use a statistical program (Microsoft Excel® or other program) to assist with computations.

**ENV 775 Environmental Health Sciences:** This course provides an introduction to ecology and ecological principles and how human population pressures affect them. Man's impact on biotic and abiotic components of the earth is examined as well as environmental factors affecting public health. Particular emphasis is placed on the impact of anthropogenic, chemical, and physical stressors and their impact on various ecosystem components and man.

**MPH 785 Public Health Policy and Politics:** This course discusses the structure of the political process in health policy making. It covers the political roles of selected health professionals and the legislative, executive, and judicial branches of government in health policy. This course provides practical mechanisms to intervene on behalf of programs or institutions.

**MPH 860 Public Health Financial Management:** This course applies basic budget and financial management concepts and techniques to public health services. Public health budgeting and finance is presented as an integrated approach enabling public health administrators to translate resource needs into budgets and to utilize financial information to identify problems, evaluate alternatives, and recommend courses of action. Students need Microsoft Excel® for this course.

**HMP 842 Human Resource Management:** This course provides an overview of human resource management practices in healthcare organizations. The critical role that leaders play in the hiring, supervision, motivation, evaluation, and overall management of staff members within their organizations is the focus of this course. Students are introduced to the functions of the human resource department while more in-depth emphasis is placed on understanding how managers in general can foster creative problem solving, collaboration, conflict resolution, empowerment, and teamwork, while maintaining a fair and productive working environment.

**MPH 870 Public Health Biology:** This course explains the role of biology in the ecological model of population-based health. This course integrates general biological and molecular concepts into public health and looks at how biological, chemical, and physical agents affect human health.

**MPH 815 Public Health Systems Policy and Management:** This is a survey course providing an overview of the policy process as applied to health. Similarly, it provides introductory content dealing with how public health and other health organizations are organized and managed.

**HEd 864 Health Education Concepts and Applied Research:** Social and epidemiological basis of health education overviews are provided. Tools are developed for assessment of community, institutional, and individual educational needs. Planning, implementation, and evaluation of health education programs designed to develop and reinforce positive health promotion and prevention practices are explored.

**MPH 874 Public Health Practicum:** This course requires completion of a project in an approved supervised public health setting emphasizing evaluation and service delivery, planning, or operations resolving a management problem or evaluating a program component. This eight-quarter credit hour practicum requires 240 contact hours in a supervised public health environment. (*8 credit hours, pass/fail*)

## Program Electives

A.T. Still University's School of Health Management requires students to complete their program of study by selecting two elective courses that are of interest to them or meet their career needs. Electives are grouped by areas of focus. Students may choose to take both elective courses from the same focus grouping or may choose to further customize their learning experience by selecting courses from varying focus groups. All electives are four credit hours.

### Health Program Planning

**HMP 850 Community Health Assessment:** Needs and capacity assessment strategies are designed for people planning to practice within the fields of public health, health promotion, or health education. Students take an in-depth look at individual, group, and self-directed assessment strategies. This course gives students an opportunity to practice learned skills, decipher what assessments are best for a given situation, and learn how to implement their new skills within their professional environments.

**HMP 851 State and Local Health Planning:** This course reviews the role of social and community factors in both the onset and solution of public health problems. It also identifies critical stakeholders for the planning, implementation, and evaluation of public health programs, policies, and interventions. This course shows students how to interpret results of statistical analyses found in public health studies and to recognize the importance of epidemiology for informing scientific, ethical, economic, and political discussions of health issues.

**HMP 852 Evaluation of Community Health Services:** Evaluation of health promotion programs in a variety of settings serve as a guide for the development and evaluation of health promotion programs that give students an opportunity for practical application in their work environment. Analysis and evaluation of a health program and its success after implementation are the focus of this course.

### Health Policy

**HMP 853 Public Health Finance and Policy:** This course is an application of policy analysis to the financing of public health in the United States. It examines healthcare from a public policy perspective to understand the underlying social and economic issues that frame the political finance debates.

**HMP 868 International Health Policy:** This course provides an overview of international public health issues with an emphasis on economically less developed countries in the areas of diseases, programs, health systems, and health policies and the various approaches nations adopt to deal with them. It explores the public health problems facing low- and middle-income countries today and identifies their three greatest global challenges: reproductive health, infectious disease, and nutrition.

**HMP 855 Public Health History:** This course examines the health of human populations from a historical perspective and will investigate the science of improving human health. Case studies are provided that will focus on the roots of contemporary public health knowledge and health policy. Topics include responses to epidemics, racial and economic disparities in healthcare services, the development of policy infrastructures, and global health.

## **Geriatric Health**

**HMP 856 Community Based Healthcare:** The development and maintenance of a community-based healthcare model are the focus of this course. Administering programs to sustain and promote a state of healthy well-being in the community and activate community resources are discussed as well as the impact of emerging models of community based healthcare programs.

**HMP 857 Cultural Change in Geriatrics:** Cultural changes have affected the perceptions of aging and its impact on intergenerational relationships. This course examines the impact those cultural changes may have on the future direction of the healthcare industry.

**HMP 858 Death and Dying, Life and Living:** Learners review death, dying, and bereavement. During the exploration of these topics, this course also covers the developmental perspective, legal and moral issues, and current events.

## **Leadership Development and the Role of Coaching**

**HMP 865 An Introduction to Professional Coaching: Skills, Knowledge, and Ethics for Leaders:** Students learn what coaching is and is not, the construct of an effective coaching alliance, the use of intuition, listening, and powerful inquiry in moving through resistance to engendering goal attainment and accountability. Students will also understand the ethics of coaching. In addition to traditional discussion forums and papers, coaching practice as part of exercises is expected, and a live oral coaching experience with the instructor is required. The objective is for students to have coach-like skills to use in leadership and management situations to improve collaboration, connection, and community within or outside a public health organization.

**HMP 866 Leadership, Coaching, and Interpersonal Communication Skills:** This course provides the student with an understanding of personal behavioral and communication styles and how to apply the principles of leadership and management coaching in a public health organization. The skills learned will improve active listening and dialogue that is effective in any situation. Students are provided the opportunity to review real-life coaching situations in leadership, develop a life purpose journal, and their own coaching journal.

**HMP 867 Coaching Practice: The Application of Coaching Methods in a Leadership Context (Prerequisite HMP 865):** Students continue to learn and apply coaching methodology in a leadership and management context within a public health organization to understand why, when, and how to use coaching for staff, team, and organizational development to meet individual and organizational needs and goals. Students learn to recognize opportunities for coaching, how to create strong relationships to promote teamwork, and how to create supportive, coaching environments in their workplace. The course requires coaching exercises where students are paired or put in triads to practice coaching methods. A live, oral coaching experience with the instructor is also required.

## **Global Health**

**HMP 869 Global Health Issues:** Global healthcare is an emerging priority for organizations and governments worldwide because of the impact on international economic stability. Technology, research, and the advancement of healthcare interventions have produced improvements in health outcomes for many. Unfortunately, these advancements have also led to inequalities in health status within and between countries. The world is faced with new challenges such as the potential for pandemics, an aging population, a diminishing healthcare workforce, and the stresses of determining resource allocation. This course explores the many facets of global health to expose the student to the complexity of the concepts that impact healthcare in developing and developed countries.

**HMP 870 Global Health Ethics:** This course provides an introduction to the principles and theory of ethics as applied to global health and healthcare, as well as how culture may influence ethical decision-making. The course explores many prominent global health issues and demonstrates how greater knowledge and understanding of global ethics is vital to effective and sound decision-making.

**HMP 871 Global Health and Politics:** This course introduces the student to issues associated with politics that affect human lives globally. This course emphasizes the political-economic, cultural, institutional, technological, and ecological implications on the health of populations around the world. Students evaluate the impact and importance of local politics on the global health scene.

## Administration



**Kimberly O'Reilly, DHEd, MSW**

Dean  
koreilly@atsu.edu

Kimberly O'Reilly, DHEd, MSW, holds a doctorate of health education and a master of social work, with a bachelor's degree in psychology and a history minor. Dr. O'Reilly is an alumna of Purdue University, Indiana University, and A.T. Still University. She practiced in the field of mental health for five years prior to entering higher education.

Since 2004, she has worked in online education teaching, creating assessment plans, developing and designing curriculum, developing programs and individualized education plans, and providing both faculty and student support services.

Dr. O'Reilly's areas of interest include improving the quality of higher education, educational technologies, bridging the gap between traditional and non-traditional educational practices, decreasing parental rights termination through proactive interventions, and improving quality of life for the terminally ill and aging populations.



**Don Altman, DDS, MPH, MBA, MA, DHSc**

Chair, Department of Public Health  
Chair, dental MPH  
daltman@atsu.edu

Don Altman, DDS, MPH, MBA, MA, DHSc holds a dental degree as well as master's degrees in public health, business administration, and bioethics. He also has a doctorate in Health Sciences. He is a diplomat of the American Board of Dental Public Health and has worked in the dental public health field for more than 28 years.

Dr. Altman has taught dentists and dental hygienists in the classroom for many years and has been teaching online since 2006. He has taken a general MPH curriculum and developed a program for individuals interested in dental public health. Dr. Altman is not only the Chair, Department of Public Health and program chair for the dental MPH program, but is also an associate professor and Director of Public Health and Research at ATSU's Arizona School of Dentistry & Oral Health.

He previously worked for local and state governments as well as private industry. His areas of interest include professionalism and ethics, community-based dental programs, leadership for the dental professional, and quality assurance.



**Katherine M. Adler, DHA, FACHE**

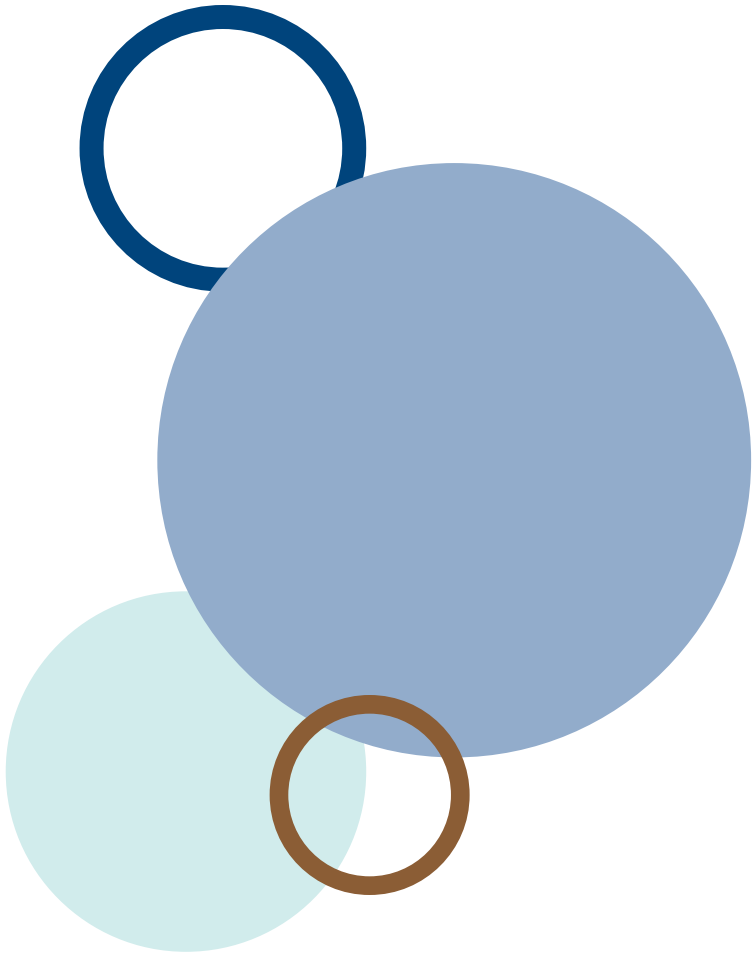
Program Chair  
kadler@atsu.edu

Katherine M. Adler, DHA, FACHE, has served as an adjunct professor at the School of Health Management since 2006 as chair of the Health Administration since fall 2009, and chair of the Public Health program since 2011.

Dr. Adler earned her bachelor's in business administration from Walsh College, her master's in administration from Central Michigan University, and her doctorate in healthcare

administration and leadership from the Medical University of South Carolina. She has more than 25 years experience in the not-for-profit healthcare industry. Prior to moving to academia, she served as administrative director of adult clinical services at a large medical center and administrative director of hematology/oncology at a large cancer center.

Dr. Adler is passionate about teaching future healthcare leaders. She is a skilled instructor in leadership skills and mentoring. Her research interests include patient-centered delivery of care and the generational differences that encompass the workplace.



866.331.8444 | [shmonlineadmissions@atsu.edu](mailto:shmonlineadmissions@atsu.edu) | [www.atstu.edu](http://www.atstu.edu)

**ATSU**  

---

**A.T. STILL  
UNIVERSITY**