

# Public Health Dental Emphasis

program guide



A.T. STILL UNIVERSITY  
SCHOOL OF HEALTH MANAGEMENT

ATSU

# Table of Contents

- From the Chair . . . . . 1
- A.T. Still University . . . . . 2
- School of Health Management . . . . . 2
- Curriculum. . . . . 2
- Requirements for Admission . . . . . 2
- Program Statistics . . . . . 3
- Application Information . . . . . 3
- Tuition and Expenses . . . . . 3
- Financial Assistance . . . . . 3
- Accreditation . . . . . 3
- Course Descriptions . . . . . 4
- Program Electives . . . . . 5
- Administration . . . . . 8

## ATSU Mission Statement

A.T. Still University of Health Sciences serves as a learning-centered university dedicated to preparing highly competent professionals through innovative academic programs with a commitment to continue its osteopathic heritage and focus on whole person healthcare, scholarship, community health, interprofessional education, diversity, and underserved populations.



## **From the Chair**

Thank you for considering SHM's dental M.P.H. program. Our courses use real-life examples and literature to truly immerse you in dental public health. This program is a unique opportunity for working professionals who wish to expand their knowledge related to public health functions and how that knowledge impacts the dental profession.

In our program, you will complete the entire curriculum from your hometown – no traveling at any time during your coursework; all courses are online, enabling you to balance your professional and personal life with your education.

Also, for dentists who are interested in becoming board eligible in dental public health, our accredited program is a great start toward eligibility.

**Don Altman, DDS, MPH, MBA, MA**

*Program Chair*

*Master of Public Health – Dental Emphasis (MPH)*

## **A.T. Still University**

Established in 1892 by the founder of osteopathy, A.T. Still, MD, DO, ATSU began as the nation's first college of osteopathic medicine and has evolved into a leading university of health sciences. Today, ATSU is comprised of five schools: Kirksville College of Osteopathic Medicine, School of Osteopathic Medicine in Arizona, Arizona School of Health Sciences, Arizona School of Dentistry & Oral Health, and School of Health Management.

ATSU offers more than 20 master's degrees across allied healthcare disciplines; doctorates in health education, physical therapy, health sciences, and audiology; the doctor of dental medicine (DMD); and the doctor of osteopathic medicine (DO).

## **School of Health Management**

The School of Health Management offers master's degrees in health administration and public health; and a doctoral degree in health education. SHM educates and prepares current and future professionals for management positions in a variety of healthcare settings via comprehensive online programs.

## **Curriculum**

SHM's online master's degree in public health with a dental emphasis prepares students who have an interest in the dental industry for leadership in the field of public health. This program integrates web-based instruction, directed readings, email, and chat room interactions among students and faculty. The School uses mission-driven, context-based curriculum design and assesses student learning through authentic embedded assessments.

## **Requirements for Admission**

1. Bachelor's degree or higher from an accredited university. Applicants who graduated from a university outside the United States must provide a degree equivalency evaluation.
2. Completed admissions application.
3. Official transcript from degree-granting institution.
4. Non-refundable application fee submitted with application.
5. Minimum cumulative Grade Point Average (CGPA) of 3.0 (4.0 scale).
6. Completion of an essay, submission of two professional references, and completion of required online orientation.
7. Test of English as a Foreign Language (TOEFL) for applicants when English is a second language. The Computer Based Test (CBT), Internet Based Test (iBT), or the Paper-Based Test (PBT) will be accepted. The following are the minimum required score based on test type:
  - CBT - minimum total score of 213
  - iBT - minimum total score of 80
  - PBT - minimum total score of 550
8. Applicants are selected by an admission committee.

## Program Statistics

Classroom Size .....	18
Average Student Age.....	32
Average Cumulative Graduate GPA.....	3.71
Length of Program .....	13 core courses, 2 elective courses, 64 credit hours

## Application Information

Applications are available online at [www.atsu.edu](http://www.atsu.edu), or you may contact an online enrollment counselor at 866.331.8444 or [shmonlineadmissions@atsu.edu](mailto:shmonlineadmissions@atsu.edu).

## Tuition and Expenses

Tuition .....	\$1,685 per course*
Activity fee .....	\$150 per quarter*
Application fee .....	\$70, non-refundable*

Tuition is charged per course, not per credit hour. SHM tuition rates are competitive. Tuition is to be paid in full on or before the first day of classes. Students are responsible for the purchase of their classroom materials, Internet service fees, and computer hardware and software fees. Contact your admissions representative at 866.331.8444 or [shmonlineadmissions@atsu.edu](mailto:shmonlineadmissions@atsu.edu) for more information.

\*All fees are subject to change.

## Financial Assistance

Federal Financial Aid is available to students who qualify. Scholarship and financial assistance opportunities are listed on the SHM web page at [www.atsu.edu](http://www.atsu.edu). Veterans Administration (VA) benefits may also be used.

## Accreditation

A.T. Still University is accredited by the Higher Learning Commission of the North Central Association of Colleges and Schools (NCA), 230 South LaSalle St., Suite 7-500, Chicago, IL 60604, phone 800.621.7440.

# Master of Public Health – Dental Emphasis Curriculum

## *Online Learning*

### Course Descriptions

Course descriptions, course durations, and related information are subject to change. All courses are four credit hours unless otherwise specified.

**MPH 736 Introduction to Dental Public Health:** This course is a comprehensive introduction to public health and dental public health within the context of the U.S. healthcare system. Course content includes basic organizational arrangements of health services in the United States; the concept of public health, its problems in the context of social and community factors, its development from a historical perspective, and the role and mission of public health organizations, science, philosophy, and practice of dental public health.

**MPH 737 Practical Dental Research, Planning, and Design:** Students develop and implement a dental public health research project, enhancing their skills related to search strategies, problem statements, literature review, protocol preparation, and how they relate to their research projects.

**MPH 786 Professionalism and Ethics in Dental Public Health:** This course looks at how to apply ethical principles to dental public health program planning, implementation, and evaluation. It describes the legal and ethical bases for dental public health and dental services.

**HEd 777 Behavior Sciences and Educational Concepts:** An overview of the theoretical model and research methodologies used in health education research/programs is provided. This course explores the integration of culture, language, and literacy when designing, implementing, and evaluating dental public health programs.

**BIO 746 Biostatistics for Dental Research:** Key statistical tools and concepts used by managers in dental public health are examined. Concepts covered include descriptive statistics, inferential statistics, probability, hypothesis testing, and regression analysis.

**MPH 806 Financing Dental Care:** This course examines the various ways in which dental care is financed, including mechanisms of payment for providers, third-party plans, salaried and public-financed programs, and federal systems such as Medicare and Medicaid.

**MPH 870 Public Health Biology:** This course explains the role of biology in the ecological model of population-based health. This course integrates the general biological and molecular concepts into public health and looks at how biological, chemical, and physical agents affect human health.

**EPI 756 Dental Epidemiology:** General principles of epidemiology, including research methods, study designs, sampling, data analysis, interpretation of data, and application of findings to dental public health policy, are explained. This course closely examines distribution and determinants of oral disease such as caries, periodontal disease, and oral cancer.

**MPH 796A Community-Based Programs:** This course looks at various community-based programs and how best to develop, implement, and evaluate these programs as well as financing these programs. Students work with a local organization/ institution/agency to develop a comprehensive oral health plan for a community.

**MPH 796B Community-Based Programs:** This course looks at various community-based programs and how best to develop, implement, and evaluate these programs as well as financing these programs. Students work with a local organization/ institution/agency to develop a comprehensive oral health plan for a community.

**ENV 775 Environmental Health Sciences:** This course introduces ecology and ecological principles and examines how human population pressures affect them. Man's impact on biotic and abiotic components of the earth is examined, as well as environmental factors affecting public health. Particular emphasis is placed on the impact of anthropogenic, chemical, and physical stressors, and their impact on various ecosystem components and man.

**MPH 766 Dental Healthcare Policy and Management:** This course focuses on the application of general management concepts including management process, descriptions of management functions, managerial roles, and organizational culture. It includes practical aspects of planning, staffing, financing, implanting, evaluating, and communicating dental public health programs at the local, state, and federal levels. A practical look at dental public health policy-making and how best to translate policy into practice is provided.

**MPH 874 Public Health Practicum:** Completion of a project in an approved supervised public health setting emphasizing evaluation and service delivery, planning, or operations resolving a management problem or evaluating a program component is required. This is an eight-quarter credit hour practicum requiring 240 contact hours in a supervised public health environment. (8 credit hours)

## Program Electives

A.T. Still University's School of Health Management requires students to complete their program of study by selecting two elective courses that are of interest to them or meet their career needs. Electives are grouped by areas of focus. Students may choose to take all courses from within the same focus grouping, or may choose to further customize their learning experience by selecting courses from varying focus groups.

## Health Program Planning

**HMP 850 Community Health Assessment:** Needs and capacity assessment strategies are designed for people planning to practice within the fields of public health, health promotion, or health education. Students take an in-depth look at individual, group, and self-directed assessment strategies. This course gives students an opportunity to practice learned skills, decipher what assessments are best for a given situation, and learn how to implement their new skills within their professional environments.

**HMP 851 State and Local Health Planning:** This course reviews the role of social and community factors in both the onset and solution of public health problems. It also identifies critical stakeholders for the planning, implementation, and evaluation of public health programs, policies, and interventions. This course shows students how to interpret results of statistical analyses found in public health studies and to recognize the importance of epidemiology for informing scientific, ethical, economic, and political discussions of health issues.

**HMP 852 Evaluation of Community Health Services:** Evaluation of health promotion programs in a variety of settings serve as a guide for the development and evaluation of health promotion programs that give students an opportunity for practical application in their work environment. Analysis and evaluation of a health program and its success after implementation are the focus of this course.

## Health Policy

**HMP 853 Public Health Finance and Policy:** This course is an application of policy analysis to the financing of public health in the United States. It examines healthcare from a public policy perspective to understand the underlying social and economic issues that frame the political finance debates.

**HMP 868 International Health Policy:** This program provides an overview of international public health issues with an emphasis on economically less developed countries in the areas of diseases, programs, health systems, and health policies and the various approaches nations adopt to deal with them. It explores the public health problems facing low- and middle-income countries today and identifies their three greatest global challenges: reproductive health, infectious disease, and nutrition.

**HMP 855 Public Health History:** This course examines the health of human populations from a historical perspective and will investigate the science of improving human health. Case studies are provided that will focus on the roots of contemporary public health knowledge and health policy. Topics include responses to epidemics, racial and economic disparities in healthcare services, the development of policy infrastructures, and global health.

## Geriatric Health

**HMP 856 Community Based Healthcare:** The development and maintenance of a community-based healthcare model are the focus of this course. Administering programs to sustain and promote a state of healthy well-being in the community and activate community resources are discussed as well as the impact of emerging models of community-based healthcare programs.

**HMP 857 Cultural Change in Geriatrics:** Cultural changes have affected the perceptions of aging and its impact on intergenerational relationships. This course examines the impact those cultural changes may have on the future direction of the healthcare industry.

**HMP 858 Death and Dying, Life and Living:** Learners review death, dying, and bereavement. During the exploration of these topics, this course also covers the developmental perspective, legal and moral issues, and current events.

## Leadership Development and the Role of Coaching

**SHM 865 An Introduction to Professional Coaching: Skills, Knowledge, and Ethics for Leaders:** Students learn what coaching is and is not, the construct of an elective coaching alliance, the use of intuition, listening, and powerful inquiry in moving through resistance to engendering goal attainment and accountability. Students will also understand the ethics of coaching. In addition to traditional discussion forums and papers, coaching practice as part of exercises is expected, and a live oral coaching experience with

the instructor is required. The objective is for students to have coach-like skills to use in leadership and management situations to improve collaboration, connection, and community within or outside a public health organization.

**HMP 866 Leadership, Coaching, and Interpersonal Communication Skills:** This course provides the student with an understanding of personal behavioral and communication styles and how to apply the principles of leadership and management coaching in a public health organization. The skills learned will improve active listening and dialogue that is elective in any situation. Students are provided the opportunity to review real-life coaching situations in leadership, develop a life purpose journal, and their own coaching journal.

**HMP 867 Coaching Practice: The Application of Coaching Methods in a Leadership Context (Prerequisite HMP 865):** Students continue to learn and apply coaching methodology in a leadership and management context within a public health organization to understand why, when, and how to use coaching for staff, team, and organizational development to meet individual and organizational needs and goals. Students learn to recognize opportunities for coaching, how to create strong relationships to promote teamwork, and how to create supportive, coaching environments in their workplace. The course requires coaching exercises where students are paired or put in triads to practice coaching methods. A live, oral coaching experience with the instructor is also required.

## **Global Health**

**HMP 869 Global Health Issues:** Global healthcare is an emerging priority for organizations and governments worldwide because of the impact on international economic stability. Technology, research, and the advancement of healthcare interventions have produced improvements in health outcomes for many. Unfortunately, these advancements have also led to inequalities in health status within and between countries. The world is faced with new challenges such as the potential for pandemics, an aging population, a diminishing healthcare workforce, and the stresses of determining resource allocation. This course explores the many facets of global health to expose the student to the complexity of the concepts that impact healthcare in developing and developed countries.

**HMP 870 Global Health Ethics:** is course provides an introduction to the principles and theory of ethics as applied to global health and healthcare, as well as how culture may influence ethical decision-making. The course explores many prominent global health issues and demonstrates how greater knowledge and understanding of global ethics is vital to effective and sound decision-making.

**HMP 871 Global Health and Politics:** This course introduces the student to issues associated with politics that affect human lives globally. This course emphasizes the political-economic, cultural, institutional, technological, and ecological implications on the health of populations around the world. Students evaluate the impact and importance of local politics on the global health scene.

## Administration



### **Kimberly O'Reilly, DHEd, MSW**

Dean

koreilly@atsu.edu

Kimberly O'Reilly, DHEd, MSW, holds a doctorate of health education and a master of social work, with a bachelor's degree in psychology and a history minor. Dr. O'Reilly is an alumna of Purdue University, Indiana University, and A.T. Still University. She practiced in the field of mental health for five years prior to entering higher education.

Since 2004, she has worked in online education teaching, creating assessment plans, developing and designing curriculum, developing programs and individualized education plans, and providing both faculty and student support services.

Dr. O'Reilly's areas of interest include improving the quality of higher education, educational technologies, bridging the gap between traditional and non-traditional educational practices, decreasing parental rights termination through proactive interventions, and improving quality of life for the terminally ill and aging populations.



### **Don Altman, DDS, MPH, MBA, MA**

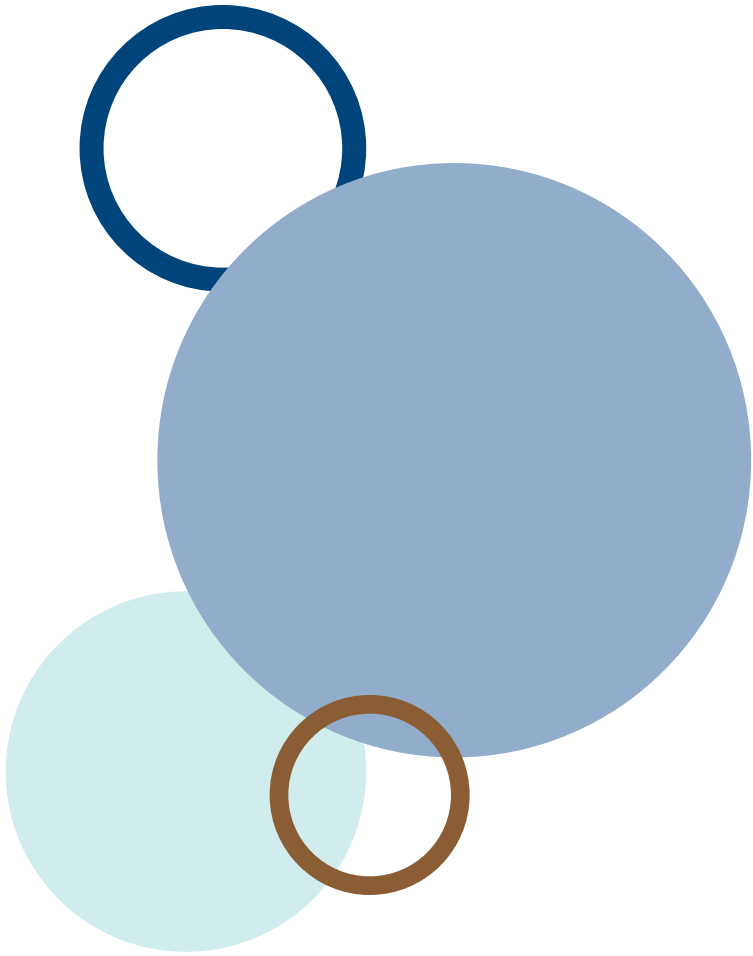
Program Chair

daltman@atsu.edu

Don Altman, DDS, MPH, MBA, MA, holds a dental degree as well as master's degrees in public health, business administration, and bioethics. He is a diplomat of the American Board of Dental Public Health and has worked in the dental public health field for more than 26 years.

Dr. Altman has taught dentists and dental hygienists in the classroom for many years and has been teaching online since 2006. He has taken a general MPH curriculum and tailor edit for individuals interested in dental public health. Dr. Altman is not only the program chair for the dental MPH program, but is also an associate professor and director of public health and research at ATSU's Arizona School of Dentistry & Oral Health. He previously worked for local and state governments as well as private industry.

His areas of interest include professionalism and ethics, community-based dental programs, leadership for the dental professional, and quality assurance.



866.331.8444 | [shmonlineadmissions@atsu.edu](mailto:shmonlineadmissions@atsu.edu) | [www.atstu.edu](http://www.atstu.edu)

**ATSU**  

---

**A.T. STILL  
UNIVERSITY**