

The A.T. Still Research Institute (known as the Still Research Institute or SRI) recognizes that its staff and researchers are its most important resources, and have established mechanisms to support their activities. This also helps to ensure that the Institute can fulfill its responsibilities in a highly effective manner. The following charts represent both the organizational structure and the research structure and flow of the SRI.

Chart 1. Still Research Institute Organizational Chart

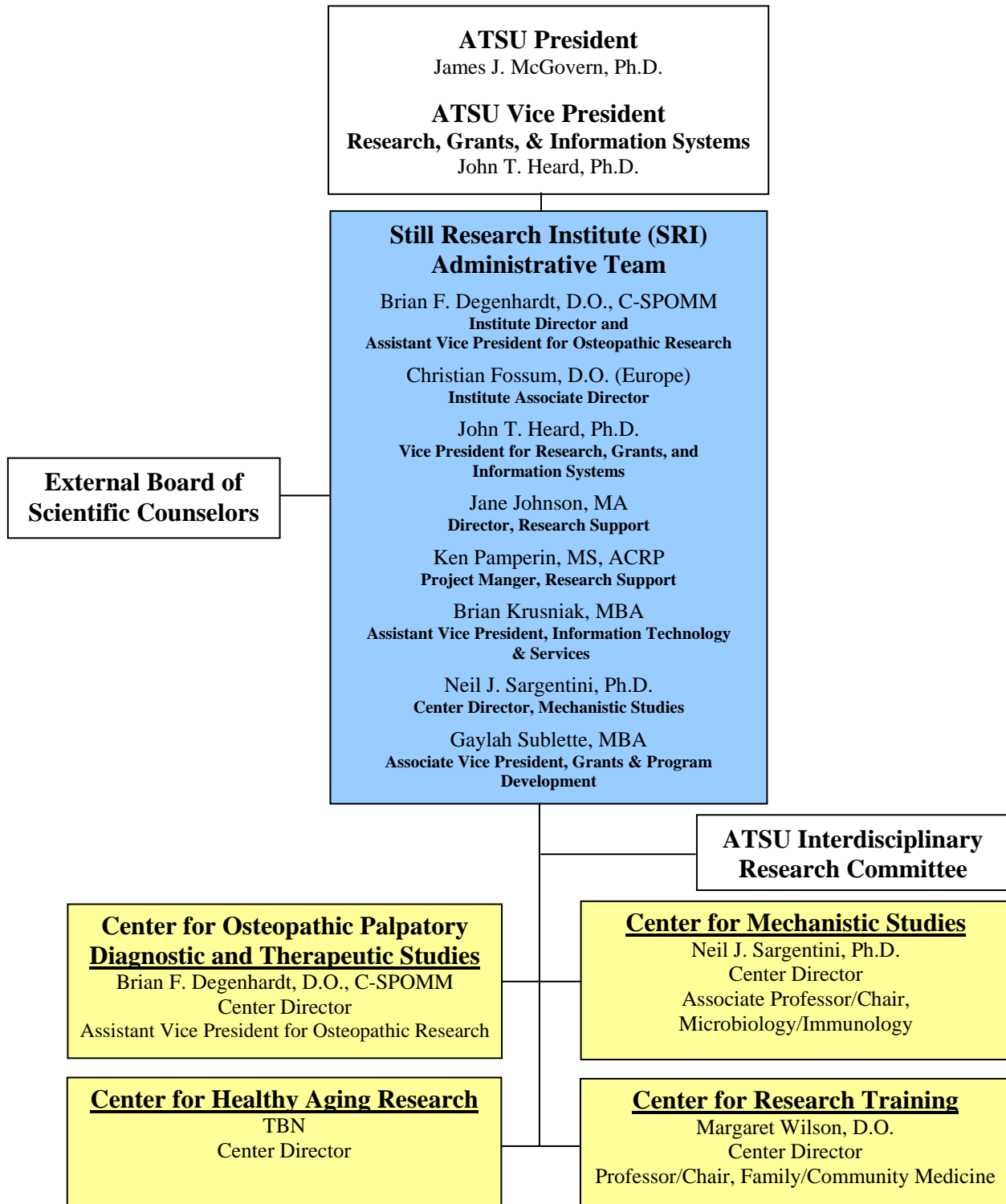


Chart 2. Organizational Chart - Division of Research, Grants, and Information Systems

